

Multipurpose Open Space Element

Draft General Plan Amendment No. 960

This page intentionally left blank

TABLE OF CONTENTS
Chapter 5: Multipurpose Open Space Element

INTRODUCTION..... OS-1
MULTIPURPOSE OPEN SPACE CONCEPTUAL FRAMEWORK OS-1
SETTING OS-2
CONSERVATION OS-3
RENEWABLE RESOURCES..... OS-3
Water Resources OS-4
Water Supply and Conveyance OS-4
Water Conservation OS-9
Watershed Management OS-10
Water Quality OS-11
Groundwater Recharge..... OS-12
Floodplain and Riparian Area Management..... OS-13
Wetlands..... OS-16
Agricultural Resources OS-16
Soil Classifications..... OS-16
Prime Farmlands OS-19
Statewide Important Farmlands OS-19
Unique Farmlands OS-19
Local Important Farmlands OS-19
Williamson Act OS-19
Forest Resources OS-21
Vegetation OS-22
Renewable Energy OS-23
Wind Energy OS-23
Solar Energy OS-23
Geothermal Resources OS-24
Biomass Resources..... OS-37
NON-RENEWABLE RESOURCES OS-37
Mineral Resources..... OS-37
Energy Resources OS-39
Petroleum Resources OS-39
Energy Conservation OS-39
PRESERVATION OS-43
MULTIPLE SPECIES HABITAT CONSERVATION PLANS..... OS-43
Coachella Valley Association of Governments MSHCP Program Description OS-44
Relationship to Area Plans..... OS-44
Western Riverside County MSHCP Program Description..... OS-44
A Stakeholder Driven Process OS-45
Relationship to Area Plans..... OS-45
ENVIRONMENTALLY SENSITIVE LANDS..... OS-46
CULTURAL RESOURCES..... OS-47
PALEONTOLOGICAL RESOURCES..... OS-51
OPEN SPACE, PARKS AND RECREATION OS-51
SCENIC RESOURCES OS-52
SCENIC CORRIDORS..... OS-53

LIST OF FIGURES

Figure OS- 1 *Rivers, Lakes, Reservoirs, and Drainage Areas ~~Water Resources~~*OS-5
 Figure OS- 2 Agricultural Resources OS-17
 Figure OS- 3a *Forestry Resources Western Riverside County
~~Parks, Forests, and Recreation Areas~~* OS-25
*Figure OS- 3b Forestry Resources Eastern Riverside County
~~Parks, Forests, and Recreation Areas~~* OS-27
 Figure OS- 4a Western Riverside County *Natural Communities ~~Vegetation~~* OS-29
Figure OS- 4b Coachella Valley Natural Communities OS-31
Figure OS- 4c Non-MSHCP Natural Communities OS-33
Figure OS-5 Renewable Energy Resources OS-35
 Figure ~~OS-6 OS-5~~ Mineral Resource *Zones ~~Areas~~* OS-41
 Figure ~~OS-7 OS-6~~ Historical Resources OS-49
 Figure ~~OS-8 OS-7~~ Paleontological Sensitivity OS-55

LIST OF TABLES

Table OS-1 South Coast Region Water Budget with Existing Facilities and Programs.....OS-8
 Table OS-2 Colorado River Region Water Budget with Existing Facilities and Programs.....OS-8



Chapter 5

Multipurpose Open Space Element

Introduction

Multipurpose Open Space Conceptual Framework

“

The open space system and methods for its acquisition, maintenance and operation are calibrated to its many functions: visual relief, natural resource protection, habitat preservation, passive and active recreation, protection from natural hazards, and various combinations of these purposes. This is what is meant by a multi-purpose open space system.

”

B—RCIP Vision Statement

The County of Riverside’s environmental setting is a critical component of its Vision for the future and its quality of life. The Vision speaks to the importance of the many forms of open space in the county: scenic, habitat, recreation, and their importance in defining the edges for our communities. The Vision also addresses the importance of agriculture to the economy and culture of Riverside County.

In response to the RCIP Vision and the California government code, this element addresses protecting and preserving natural resources, agriculture and open space areas, managing mineral resources, preserving and enhancing cultural resources, and providing recreational opportunities for the citizens of Riverside County.

The California Government Code describes the General Plan as a collection of seven mandatory elements that include: conservation, addressing the conservation, development and use of natural resources; and open space, detailing plans and measures for preserving open-space for natural resources, the managed production of resources, outdoor recreation, public health and safety, and the identification of agricultural land. The policy direction required in these two elements is provided in this single Multipurpose Open Space Element.

This element categorizes issues and policies into those that seek to **conserve**, or manage the use of, resources and those that seek to **preserve** resources for the purpose of sustaining their stocks in perpetuity. Additionally, the resource conservation section of the element is subdivided into **renewable resources** and **non-renewable resources**. Renewable resources, such as forests, are those that can reproduce, grow, and ultimately perish. Non-renewable resources as those that have a finite stock relative to human consumption over time, and that are not alive in the sense of having an ability to grow. Mineral resources, for example, are non-renewable.

Setting



Conserve-to protect from loss or harm by using carefully or sparingly.

Preserve-To keep in perfect or unaltered condition; maintain unchanged.

Reserve-A reservation of land or an amount of mineral, fossil fuel or other resource known to exist in a particular location.



A sample of the range of Riverside County's natural resources must include: California's largest inland sea, the 360-square mile Salton Sea in the southern most portion of the Coachella Valley; the Joshua Tree National Park; portions of the San Bernardino and Cleveland National Forests; the Santa Ana, Santa Rosa and San Jacinto Mountain Ranges, among others; and portions of the Colorado, Santa Ana and San Jacinto Rivers.

It is appropriate that the County of Riverside boasts of a “remarkable environmental setting” in the summary statement of its Vision. Within its roughly 7,400 square miles, Riverside County incorporates a wide range of natural features, including mountain ranges, desert areas, riparian areas and rivers, vernal pools, and oak woodlands and forests.

The Colorado Desert bio-region encompasses the southeastern portion of Riverside County, extending from the Colorado River west to the Joshua Tree National Park, and from San Bernardino County to San Diego County. This bio-region is rich in agriculture, though it is considered semi-arid. The Colorado Desert is the western extension of the Sonoran desert, which is of much lower elevation than the northern Mojave Desert. Common habitat includes sandy desert, scrub, palm oasis, and desert wash. Summers are hot and dry, and winters are cool and moist.

A portion of north-central Riverside County is part of the Mojave bio-region. This is one of the largest bio-regions in the state, encompassing seven counties in California. The Mojave bio-region is the western extension of a vast desert that covers southern Nevada, the southwestern tip of Utah, and 25% of Southern California. The climate is hot and dry in the summer, and winters are cool to cold depending upon elevation. Palm oases, streams and springs are water sources for much of the wildlife. Some of the common habitats are the desert wash Joshua Tree Scrub, palm oasis, willow riparian forest, and open sandy dunes.

The South Coast bio-region covers most of western Riverside County. This bio-region is home to the towering San Geronimo Peak at 11,500 feet, the watersheds of the San Jacinto and Santa Ana Rivers, the Cleveland and Angeles National Forests, and federal wilderness and wildlife areas. Some of the following habitats are found here: chaparral, juniper-pinyon woodland, grasslands, hardwood forests, southern oak, and yellow pine. The climate is considered mild year-round, with hot dry summers inducing wildfires and wet winters that can cause mudslides.

Further, the plant and animal life of Riverside County is diverse, and numerous animal species and narrow endemic plants (species with very limited geographic ranges) found in Riverside County have special status under the Federal Endangered Species Act and/or the California Endangered Species Act. In response to this, the County of Riverside has participated in two Multiple Species Habitat Conservation Planning processes, one covering western Riverside County, and a second in the Coachella Valley. Implications for Riverside County land use and open space planning are briefly described in this element.

Additional information on the physical setting of Riverside County can be found in the Existing Setting Report, which is part of the Environmental Impact Report (EIR) prepared for the General Plan.

The County of Riverside is in a unique position in Southern California in that it has experienced, and is poised to continue experiencing in the next 20 years, enormous population growth. At the same time, much of Riverside County's land area remains undeveloped. *Upon adoption of the General Plan in 2003,* unincorporated lands with land use designations under the umbrella of Riverside County's Open Space and Agriculture Foundation Components (refer to the Land Use Element for a description of the Foundation Component system) total roughly 80% of Riverside County's land area. Rural designations that include mountainous and desert areas add about 13% of Riverside County's lands to that total. Therefore, the vast majority of the County of Riverside is affected by policies contained within this element of the General Plan.

“

The true nature lover learns that nature is worth knowing in all her aspects, that the only deserts there are [,are] the deserts of the soul. The best pleasures cost us nothing.

”

—From a handwritten note by Riverside Naturalist Edmund Jaeger circa 1921

Conservation

Policies within the Conservation section of this element seek to guide decision-making related to renewable and non-renewable county resources. These types of resources require conservation conscious effort to consume less of scarce resources so that their stock can be sustained for the future. Conservation of natural resources applies to water, agricultural resources, forests, vegetation, mineral, and energy resources. By conserving resources we prevent degradation of the environment through pollution or loss of productive capacity within our environment.

Renewable Resources

Population growth and development continually require the use of natural resources, including those that are renewable. Following are Vision Statements that represent the guiding principles established by Riverside County to conserve and protect renewable resources for economic, cultural, and aesthetic purposes.

“We acknowledge the inter-relatedness of the economic, environmental, cultural and institutional realms of our community life as we continue to plan and build our communities in a manner that enables us to achieve mutually beneficial results.”

“We acknowledge and respect the long heritage of economic endeavors that have shaped portions of our environment through mining, agriculture, renewable energy development and similar enterprises and continue to take their value into consideration in shaping our environmental management.”

Additionally, the Vision addresses the need to protect Riverside County's environmental sustainability for future generations:

“We are beneficiaries of the past and we value that. We seek the same for our heirs. We declare that they should have an expectation that they will inherit communities and a natural environment that offer them a reasonable range of choices.”

Water Resources



Arroyo - A water-carved gully, channel or canyon. Arroyos typically contain watercourses and are located in hilly or mountainous terrain in arid and semi-arid regions.



The policies that reflect the County-City Arroyo-Watershed Committee recommendations are also included in the Land Use, Circulation, and Safety Elements.



The Metropolitan Water District, which serves water agencies in the western part of Riverside County, projects at least a doubling of water demand between 2000 and 2020. This agrees with the Department of Water Resources projections for the same period.

Riverside County incorporates four major watershed areas in which river systems, numerous lakes and reservoirs, and natural drainage areas are located. Water resources are mapped in Figure OS-1. Riverside County’s supply of water is limited by its arid climate, agricultural practices, projected population growth and its associated demand and development, and the dependence on low quality imported water. Further, the availability of imported surface water has been reduced due to changing regulations, despite an ever-increasing water demand.

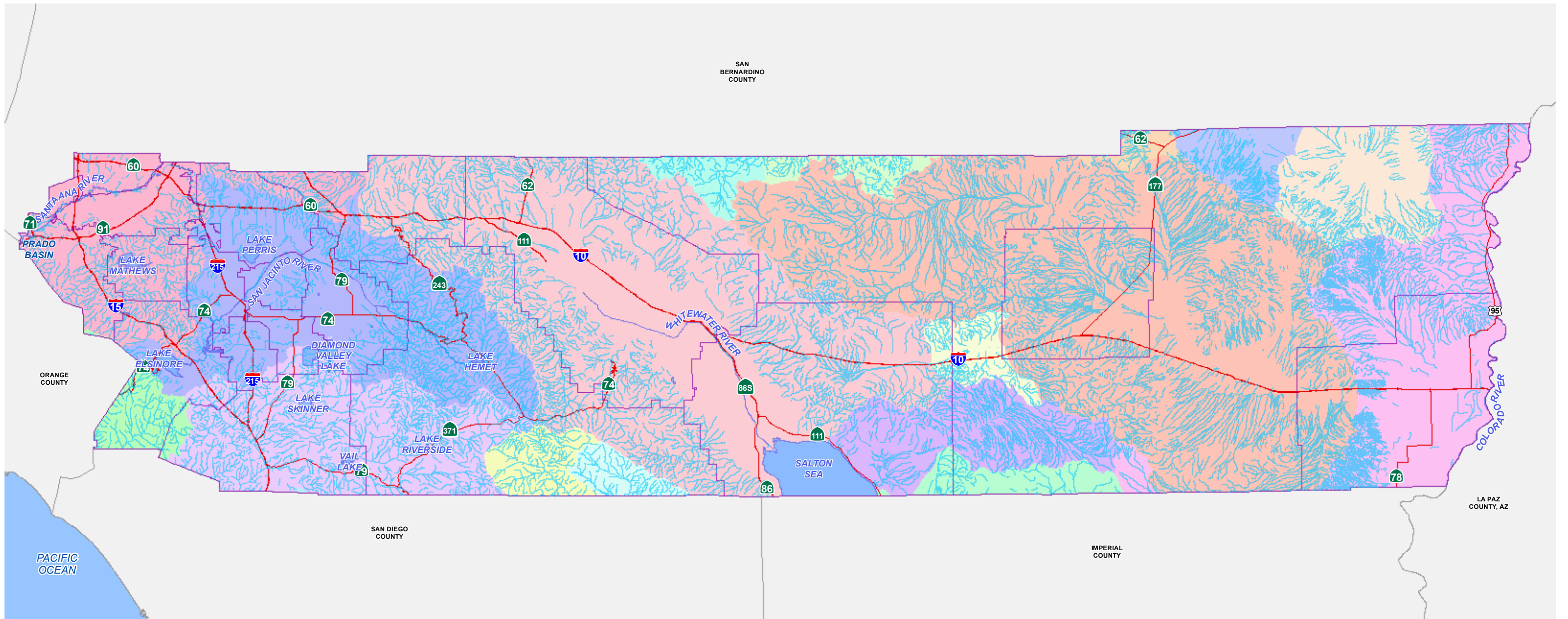
In some areas within Riverside County, contamination from natural or manufactured sources has reduced groundwater quality such that its use requires treatment. Management of the amount of water available (local and imported) and its quality, is an important response to the gap between supply and demand in Riverside County. Policies in this section seek to protect and enhance the water resources in the county. These policies address broad water planning issues, and the relationship of land use decisions to water issues.

In 2004, the Board of Supervisors and the Riverside City Council appointed a joint County-City Arroyo-Watershed Advisory Committee (CCAC) to study the impacts of development and other human activities on the arroyos and watersheds that overlap the county and the city, and make recommendations for policies, technical tools such as mapping, and other measures that would be effective in reducing such impacts. The CCAC presented its recommendations to the City Council and the Board of Supervisors in December 5, 2006. On June 5, 2007, the Board of Supervisors endorsed the recommendations, with some revisions, and directed that they be incorporated, as policies, into the General Plan. The recommendations from CCAC are included throughout this element and other elements of the General Plan.

Water Supply and Conveyance

The economy of the developed portions of western Riverside County—the inland valley—is sustained primarily by water imported from Northern California via the State Water Project and the allocations from the Colorado River, and secondarily by production of local groundwater. Local groundwater production provides a secondary water supply. The eastern portion of Riverside County—the majority of which is desert—also relies on water from the Colorado River, Northern California, and local groundwater. This portion of Riverside County is largely undeveloped, with uncertain increases in the water resource available to meet increases in water demand being a major factor that might constrain future development.

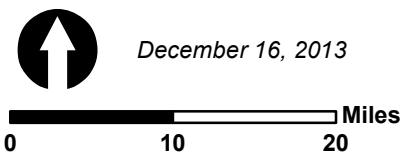
Riverside County’s water supply is uncertain for ~~two~~ *five key* reasons: ~~recent water apportionments from northern California have been reduced as part of the CALFED Bay-Delta Program, as well as decreased supplies to California from the Colorado River. Additionally, most of the County’s sources of water are currently at capacity.~~



Data Source: US Geological Survey (2008)



Figure OS-1



Disclaimer: Maps and data are to be used for reference purposes only. Map features are approximate, and are not necessarily accurate to surveying or engineering standards. The County of Riverside makes no warranty or guarantee as to the content (the source is often third party), accuracy, timeliness, or completeness of any of the data provided, and assumes no legal responsibility for the information contained on this map. Any use of this product with respect to accuracy and precision shall be the sole responsibility of the user.



**RIVERS, LAKES, RESERVOIRS,
AND DRAINAGE AREAS**

Path: \\agency\img\gis\Projects\Planning\OpenSpace\Elements\60\WaterResources.mxd

This page intentionally left blank

- 1) *A 2007 U.S. District Court Judge's decision to uphold pumping restrictions for the purpose of protecting the Delta smelt, an endangered fish species that inhabits the ecosystem surrounding the State Water Project's facilities that pump water from Northern California to Southern California. No alternative conveyance solution has been initiated.*
- 2) *Water apportionments from Northern California were reduced as part of the CALFED Bay-Delta Program.*
- 3) *Over allocation and drought conditions resulting in decreased water supplies to California from the Colorado River.*
- 4) *Most of Riverside County's sources of water are currently at capacity.*
- 5) *Water reserves are being drawn down in record amounts to compensate for the Bay-Delta water pumping/conveyance limitations and conditions on the Colorado River.*



An acre-foot of water is the volume of water represented by a 1-foot depth of water over a one-acre area (43,560 cubic feet of water or approximately 326,000 gallons), and is enough to supply the water needs of 2 families for 1 year.

Water storage to meet peak demand, or a two-day to one-day supply, is provided by many local water agencies within Riverside County. However, long-term storage of large quantities of water is provided only in the Metropolitan Water District (MWD) and California Department of Water Resources (DWR) facilities. Total storage capacity in the existing reservoir system is 871,000 acre-feet (a.f.). Three of these storage facilities are located in Riverside County: Lake Mathews, Lake Skinner, and Lake Perris. Together, these storage facilities have a total of 342,300 a.f. of storage capacity. Diamond Valley Lake triples this capacity with an additional 800,000 a.f. of storage, bringing the total storage capacity available within Riverside County to 1,142,300 a.f. Even though the creation of Diamond Valley Lake has allowed for three times the current storage of water, there is no increase in the total amount of water available to Riverside County that can be identified. This increase in water storage will benefit the whole South Coast region, which includes other significant jurisdictional water users such as San Diego County, as well as Riverside County. Currently, approximately 3/8ths of existing storage capacity may be used to meet seasonal demand. The remaining 5/8ths is reserved for emergency need such as severe droughts and/or use when a natural disaster, such as an earthquake, makes it impossible to meet demand through usual supply facilities.

Projected 2020 water use and population levels indicate an expected water shortage for the two hydrologic regions that comprise Riverside County: the South Coast and Colorado River regions. Though these regions include most of Southern California, and not just Riverside County, they are each representative of the types of supply and demand within Riverside County. The two regions are defined as follows:

- South Coast: Basins draining into the Pacific Ocean from the southeastern boundary of Rincon Creek Basin in western Ventura County to the Mexican border.
- Colorado River: Basins south and east of the South Coast and South Lahontan regions; areas that drain into the Colorado River, the Salton Sea, and other closed basins north of the Mexican border.

The DWR produces a California Water Plan every five years that not only includes a statewide water budget but also regional watershed water budgets. These water budgets are based on California Department of Finance population projections, and indicate clearly that demand for water will exceed supply in 2020 whether or not a drought condition exists at that time. Most of California's regions, except for the North Coast and San Francisco Bay regions, experience average-year and drought-year shortages now, and are forecasted to experience increased

shortages in 2020. The largest average-year shortages are forecasted for the South Coast region, which heavily relies on imported water. Future average-year shortages in the South Coast region reflect forecasted population growth plus lower Colorado River supplies as California reduces its use of Colorado River water to the State of California’s basic apportionment. Following are the descriptions of the two hydrologic regions as well as regional water budgets (Tables OS-1 and OS-2):

**Table OS-1
South Coast Region Water Budget with Existing Facilities and Programs**

Water Use	1995		2020	
	Average	Drought	Average	Drought
Urban	4,340	4,382	5,519	5,612
Agricultural	784	820	462	484
Environmental	100	82	104	86
Total	5,224	5,283	6,084	6,181
Supplies				
Surface Water	3,839	3,196	3,625	3,130
Groundwater	1,177	1,371	1,243	1,462
Recycled and Desalted	207	207	273	273
Total	5,224	4,775	5,141	4,865
Shortage	0	508	944	1,317

Note: Figures in thousands of acre-feet of water.

**Table OS-2
Colorado River Region Water Budget with Existing Facilities and Programs**

Water Use	1995		2020	
	Average	Drought	Average	Drought
Urban	418	418	740	740
Agricultural	4,118	4,118	3,583	3,583
Environmental	39	38	44	43
Total	4,575	4,574	4,367	4,366
Supplies				
Surface Water	4,154	4,128	3,920	3,909
Groundwater	337	337	285	284
Recycled and Desalted	15	15	15	15
Total	4,506	4,479	4,221	4,208
Shortage	69	95	147	158

Note: Figures in thousands of acre-feet of water.

Of the two hydrologic units of the state, the Colorado River region is of particular concern because it encompasses the Coachella Valley in the West Basin and the desert in the East Basin (Refer to Figure OS-1, Water Resources). Irrigation needs in the Coachella Valley are met almost exclusively by water imported from the Colorado River. Historical extraction of groundwater in the Coachella Valley has caused overdraft. ~~Currently, a~~ *An* extensive groundwater recharge project is being undertaken by the Coachella Valley Water District that recharges Colorado River Water into spreading basins. Within the East Basin, irrigation and domestic water is provided by the Colorado River with only approximately 1% groundwater use and little direct reclamation. Agricultural runoff and some domestic wastewater do get returned to the Colorado River. Therefore, the water source at the southern end of the watershed is actually a mixture of Colorado River water, agricultural runoff, and reclaimed water.


In an effort to reduce local reliance on Colorado River and the State Water Project, Western Municipal Water District and numerous other water agencies have embarked on a conjunctive use project that will collect and store local run off in wet years for the purpose of

delivering it to local consumers. When completed, the Riverside-Corona Feeder will include 20 wells and 28 miles of pipeline capable of moving 40,000 acre-feet of water annually—enough to meet the water needs of nearly 80,000 families.

The following policies are intended to address Riverside County’s water supply issues:

Policies:

- OS 1.1 Balance consideration of water supply requirements between urban, agricultural, and environmental needs so that sufficient supply is available to meet each of these different demands. (AI 3)
- OS 1.2 Develop a repository for the collection of Riverside county water resource information. (AI 11, 55)
- OS 1.3 Provide active leadership in the regional coordination of water resource management and sustainability efforts affecting Riverside County and continue to monitor and participate in, as appropriate, regional activities, addressing water resources, groundwater, and water quality, such as a Groundwater Management Plan, to prevent overdraft caused by population growth. (AI 4, 55, 58, 122)
- OS 1.4 *Promote the use of recycled water for landscape irrigation. (AI 3, 4, 57, 130, 131)*



The General Plan policy and implementation item reference system:

LU 1.3: *Identifies which element contains the Policy, in this case the Land Use Element, and the sequential number.*

AI 1 and AI 4: *Reference to the relevant Action Items contained in the Implementation Program found in Appendix K.*

Water Conservation

In order to ~~help~~ bridge the projected gap between water supply and demand in Riverside County in 2020, water conservation must be a priority. *Historical landscaping practices, incongruous with the dry California environment, account for the majority of the region’s daily water consumption. Approximately 60% of a residential site’s water consumption is used to irrigate outdoor landscaping while approximately 50% of commercial water use is similarly utilized. Inefficient landscape practices account for the majority of the region’s water-waste.* Following are water conservation policies that seek to manage existing supplies, by promoting the efficient use of water to the maximum extent possible, ~~so that they can be maintained for future use.~~

Policies:

- OS 2.1 *Implement a water-efficient landscape ordinance and corresponding policies that promote the use of water-efficient plants and irrigation technologies, minimizes the use of turf, and reduces water-waste without sacrificing landscape quality. (AI 3, 57, 130, 58, 62)*
- OS ~~2.1~~ 2.2 Encourage the installation of water-conserving systems such as dry wells and graywater systems, where feasible, especially in new developments. The installation of cisterns or infiltrators shall also be encouraged to capture rainwater

~~The General Plan policy and implementation item reference system:~~

~~Identifies which element contains the Policy, in this case the Land Use Element, and the sequential number.~~

~~LU 1.3~~

~~Neighborhood~~

~~Commercial uses should be located near residential uses.~~

~~(AI 1 and AI 4)~~

~~Reference to the relevant Action Items contained in the Implementation Program~~



The Riverside County Ordinance No. 859, the Water Efficient Landscape

Requirements applies to all new and rehabilitated landscapes associated with residential uses with a total landscape area equal to or greater than 2,500 square feet and all new and rehabilitated landscapes associated with commercial or industrial uses.

from roofs for irrigation in the dry season and flood control during heavy storms. (AI 57, 62)

~~OS 2.2 Where feasible, decrease stormwater runoff by reducing pavement in development areas, and by design practices such as permeable parking bays and porous parking lots with bermed storage areas for rainwater detention. (AI 57, 62)~~

OS 2.3 *Seek opportunities to coordinate water-efficiency policies and programs with water service providers. (AI 4, 131, 58)* ~~Encourage native, drought-resistant landscape planting. (AI 3, 57, 62)~~

OS 2.4 Support and engage in educational outreach programs with other agencies, *the public, homebuilders, landscape installers, and nurseries* that promote water conservation and wide-spread use of water-*efficient saving* technologies. (AI 58)

OS 2.5 Encourage continued agricultural water conservation and recommend the following practices where appropriate and feasible: lining canals, recovering tail water at the end of irrigated fields, and appropriate scheduling of water deliveries. (AI 57)



The Watershed Approach

According to the U.S. EPA, effective watershed management results in a focus on priority problems; community building wherein stakeholder partners collaborate to seek local solutions; cost savings for regulators, and predictability for those regulated.

Watershed Management

Four distinct watershed areas are incorporated in Riverside County and are mapped in Figure OS-1. These are the Santa Ana River Basin, which drains into the Pacific Ocean; San Diego Basin, the West Basin of the Colorado River, and the East Basin of the Colorado River. The East Basin of the Colorado River drains into the Colorado River and the West Basin of the Colorado River drains primarily into the Salton Sea Trough. The Santa Ana River Basin drains into the Pacific Ocean in Orange County while the San Diego Basin drains into the Pacific Ocean in San Diego County. These large watersheds are further divided into smaller sections by internal surface water drainage areas and groundwater basins.

Watershed management relates to sustaining watersheds at an acceptable level of quality, contributing to resource quality, and maintaining groundwater supplies.



A **watershed** is the entire region drained by a waterway that drains into a lake or reservoir. It is the total area above a given point on a stream that contributes water to the flow at that point, and the topographic dividing line from which surface streams flow in two different directions. Clearly, watersheds are not just water. A single watershed may include combinations of forests, glaciers, deserts, and/or grasslands.

Water Quality

Water quality problems that **have** occurred in Riverside County have related to inadequate subsurface sewage disposal, waste disposal management of the Santa Ana River, agriculturally-related problems such as citricultural runoff in the western county and increasing salinity of the desert groundwater basins, sediment buildup of water bodies from construction-related erosion, lake water quality problems, *loss of permeability*, and *non-point source* pollution due to urban stormwater system runoff. Regional Water Quality Control Boards for Regions 7, 8, and 9 provide state-level water quality policy for Riverside County. Further, the National Pollutant Discharge Elimination System mandates Best Management Practices in order to effectively minimize the adverse effects of pollution and protect water quality. The following policies are intended to provide local guidance for the protection and maintenance of water quality in Riverside County.

Policies:

- OS 3.1 Encourage innovative and creative techniques for wastewater treatment, including the use of local water treatment plants.
- OS 3.2 Encourage *innovative wastewater treatment techniques innovations, sanitary sewer systems, and groundwater management strategies that protect groundwater quality in rural areas.*
- OS 3.3 Minimize pollutant discharge into storm drainage systems, ~~and~~ natural drainages, and aquifers (AI 3)
- OS 3.4 Review proposed projects to ensure compliance with the National Pollutant Discharge Elimination System (NPDES) Permits and require them to prepare the necessary Stormwater Pollution Prevention Program (SWPPP). (AI 3)*
- OS 3.5 Integrate water runoff management within planned infrastructure and facilities such as parks, street medians and public landscaped areas, parking lots, streets, etc. where feasible.*
- OS 3.6 Design the necessary stormwater detention basins, recharge basins, water quality basins, or similar water capture facilities to protect water-quality. Such facilities should capture and/or treat water before it enters a watercourse. In general, these facilities should not be placed in watercourses, unless no other feasible options are available.*
- OS 3.7 Where feasible, decrease stormwater runoff by reducing pavement in development areas, reducing dry weather urban runoff, and by incorporating “Low Impact Development,” green infrastructure and other Best Management Practice design measures such as permeable parking bays and lots, use of less pavement, bio-filtration, and use of multi-functional open drainage systems, etc. (AI 57, 62)*



Low Impact Development, LID is a comprehensive land planning and engineering design approach to land development, redevelopment, and development retrofits that aims to maintain the pre-development hydrologic regime of urban and developing watersheds. LID works with nature to manage stormwater and urban runoff as close to its source as possible. A wide variety of design measures can be applied to implement LID that improve permeability, water quality, water use efficiency, and aesthetic quality according to the needs of a site or project vision. LID has been adapted to a range of land uses from high density ultra-urban settings to low density rural development.



Best Management Practices or BMPs for stormwater management are site-specific measures with quantifiable goals to address increases in runoff volume and rate, and increases in pollutant concentrations due to increasing urbanization and imperviousness of watersheds. Stormwater BMPs range from engineered measures, technological solutions, and Low Impact Development to measures like education and training. BMPs cover all aspects of planning, design, construction, post-construction, and on-going maintenance and management of projects.

Groundwater Recharge

Groundwater resources in Riverside County are defined by their quality as well as quantity. Most groundwater basins within Riverside County store local and imported water for later use to meet seasonal and drought-year demands. Under these groundwater recharge programs, groundwater is artificially replenished in wet years with surplus imported water. Water is then extracted during drought years or during emergency situations. Groundwater recharge that may also involve the recharge of reclaimed water, enhances the region’s ability to meet water demand during years of short supply, and increases overall local supply reliability. *Groundwater recharge is also affected by reduced natural percolation capacity due to impervious, urban surfaces and pollution from specific intensive industrial and agricultural uses.* In order to facilitate *high quality* groundwater recharge, the following policies may apply:

★
 Water banking is a key factor for meeting future water supply needs in Southern California. Historically, groundwater extractions have exceeded natural recharge in this region, resulting in declining water levels and water quality. Using groundwater basins for water banking during wet periods will help alleviate Southern California’s water supply problems.

Policies:

- OS 4.1 Support efforts to create additional water storage where needed, in cooperation with federal, state, and local water authorities. Additionally, support and/or engage in water banking in conjunction with these agencies where appropriate, as needed. (AI 56, 57)
- OS 4.2 Participate in the development, implementation, and maintenance of a program to recharge the aquifers underlying the county. The program shall make use of flood and other waters to offset existing and future groundwater pumping, except where:
 - a. The groundwater quality would be reduced;
 - b. The available groundwater aquifers are full; or
 - c. Rising water tables threaten the stability of existing structures. (AI 56, 57)

OS 4.3 Ensure that adequate aquifer water recharge areas are preserved and protected. (AI 3, 56, 57)

OS 4.4 Incorporate natural drainage systems into developments where appropriate and feasible. (AI 3)

OS 4.5 Encourage streets in a vicinity of watercourses to include park strips or other open space areas that allow permeability.

- OS ~~4.5~~ 4.6 Retain storm water at or near the site of generation for percolation into the groundwater to conserve it for future uses and to mitigate adjacent flooding. *Such retention may occur through “Low Impact Development” or other Best Management Practice measures.* (AI 57)
- OS 4.7 *Encourage storm water management and urban runoff reduction as an enhanced aesthetic and experience design element. Many design practices exist to accomplish this depending on site conditions, planned use, cost-benefit, and development interest.* (AI 132)
- OS ~~4.6~~ 4.8 Use natural approaches to managing streams, to the maximum extent possible, where groundwater recharge is likely to occur. (AI 57)
- ~~OS 4.7 Offer incentives to landowners whose property is prohibited from development due to its retention as a natural ground water recharge area. These incentives shall be provided to encourage the preservation of natural water courses without creating undue hardship on the owner of properties, and might include density transfer mechanisms.~~ (AI 9)
- OS 4.9 *Discourage development within watercourses and areas within 100 feet of the outside boundary of the riparian vegetation, the top of the bank, or the 100 year floodplain, whichever is greater.*

Floodplain and Riparian Area Management

Floodplains are subject to geomorphic (land-shaping) and hydrologic (water flow) processes. The watercourse and its floodway are usually the focus of construction and control; while fertile, flat and “reclaimed” floodplain lands are usually the focal points for other activities such as agriculture, commerce, and residential development. These areas form a complex physical and biological system that not only supports a variety of natural resources, but also provides natural flood and erosion control. In addition, the floodplain represents a natural filtering system, with water percolating back into the ground and replenishing groundwater. When a watercourse is divorced from its floodplain with levees and other flood control facilities, then natural, built-in benefits are either lost, altered, or significantly reduced.

The conventional assumption that flooding can be completely eliminated has meant not only an unrealistic reliance on manufactured flood protection, but also the development of a flood control system that squeezes rivers into artificially narrow channels, adds steeply sloped levees (devoid of riparian vegetation), and eliminates historic floodplains, all in the name of reclamation, flood protection and urban growth. Unfortunately, this highlights the fact that floods have been viewed for far too long as everything except part of the natural life cycle of rivers and floodplains. Flooding is part of the dynamic nature of healthy rivers and ecosystems. High flows and flood waters are needed to cleanse the channels of accumulated debris, build stream banks, import gravels for aquatic life, thin riparian forests and create riparian habitat. The open space of floodplains adjacent to rivers and streams



Development is defined as the division of a parcel of land into two or more parcels; the construction, reconstruction, conversion, structural alteration, relocation or enlargement of any structure that would require a discretionary permit from the County; any mining, excavation, landfill or land disturbance, and any use or extension of the use of land that would require a discretionary permit from the County.

Development does not include non-motorized trails, agriculture or other uses for which a discretionary permit is not required. For purposes of this definition, the term, discretionary permit, shall have the same meaning as that set forth in the California Environmental Quality Act and Guidelines.



Also see the Flood and Inundation Hazard Abatement section of the Safety Element.

helps store and slowly release floodwaters, thus reducing flood flow and peaks and their subsequent impacts during small and frequent flood events.

Further, riparian habitat within floodplains is of great value to resident and migratory animal species, as it provides corridors and linkages to and from the biotic regions of the county. The numerous essential habitat elements provided by the remaining riparian corridors of Riverside County make them a significant contributor to wildlife habitat throughout the county. The intent of Riverside County is to sustain “living” riparian habitats to the maximum extent possible.



Floodplains are comprised of the floodway and the floodway fringe. They are the low, flat, periodically flooded lands adjacent to rivers, lakes and oceans inundated by 100-year flood.

The **floodway** is the channel of a river or other watercourse and the adjacent land areas that must be reserved in order to discharge the 100-year flood without cumulatively increasing the water surface elevation more than one foot.

The **floodway fringe** is that portion of the floodplain between the floodway and the limits of the existing 100-year floodplain.

The following set of policies addresses floodways, the floodplain fringe, and riparian areas in Riverside County.

Policies:

- OS 5.1 Substantially alter floodways or implement other channelization only as a “last resort,” and limit the alteration to:
 - a. that necessary for the protection of public health and safety only after all other options are exhausted;
 - b. essential public service projects where no other feasible construction method or alternative project location exists; or
 - c. projects where the primary function is improvement of fish and wildlife habitat. (AI 25, 59, 60)

- OS 5.2 If substantial modification to a floodway is proposed, design it to reduce adverse environmental effects to the maximum extent feasible, considering the following factors:
 - a. stream scour;
 - b. erosion protection and sedimentation;
 - c. wildlife habitat and linkages;
 - d. cultural resources including human remains;*
 - e. groundwater recharge capability;*
 - f. adjacent property; and*
 - g. design (a natural effect, examples could include soft riparian bottoms and gentle bank slopes, wide and shallow floodways, minimization of visible use of concrete, and landscaping with native plants to the maximum extent possible). A site specific hydrologic study may be required. (AI 25, 59, 60)*

- OS 5.3 Based upon site, specific study, all development shall be set back from the floodway boundary a distance adequate to address the following issues: (AI 59, 60, *133*)
- a. public safety;
 - b. erosion;
 - c. riparian or wetland buffer;
 - d. wildlife movement corridor or linkage; ~~and~~
 - e. slopes;
 - f. type of watercourse; and*
 - g. cultural resources.*
- OS 5.4 Consider designating floodway setbacks for greenways, trails, and recreation opportunities on a case-by-case basis. (AI 25, 59, 60)
- OS 5.5 ~~New development shall~~ Preserve and enhance existing native riparian habitat and prevent obstruction of natural watercourses. *Prohibit fencing that constricts flow across watercourses and their banks. Incentives shall be utilized to the maximum extent possible.* (AI 25, 60)
- OS 5.6 Identify and, to the maximum extent possible, conserve remaining upland habitat areas adjacent to wetland and riparian areas that are critical to the feeding, hibernation, or nesting of wildlife species associated with these wetland and riparian areas. (AI 60, 61)
- OS 5.7 Where land is prohibited from development due to its retention as natural floodways, floodplains and watercourses, incentives should be available to the owner of the land including density transfer and other mechanisms as may be adopted. These incentives will be provided for the purpose of encouraging the preservation of natural watercourses without creating undue hardship on the owner of properties following these policies. (AI 60, *134, 135*)



Watercourse is defined as any natural stream, river, creek, waterway, gully, ravine or wash in which water flows in a definite direction or course, either continuously or intermittently, and has a definite channel, bed and banks. A watercourse also includes any vegetation along the banks as well as any adjacent areas that are inundated or saturated by surface or ground water at a frequency and duration sufficient to support, and that under normal circumstances do support, a prevalence of vegetation typically adapted for life in saturated soil conditions including swamps, marshes, and bogs.



The term “**Ariparian area**” is defined as a wetland which occurs along a watercourse. A **Upland habitat**” is elevated above lowlands occurring along or within a river, stream, lake etc. Upland habitat is that which does not meet the criteria of federal-and-state jurisdictional wetlands.

Wetlands

Wetlands in Riverside County might typically occur in low-lying areas that receive fresh water at the edges of lakes, ponds, streams, and rivers. Wetlands provide habitat for a wide variety of plants, invertebrates, fish, and larger animals, including many rare, threatened, or endangered species. The plants and animals found in wetlands include both those that are able to live on dry land or in the water and those that can live only in a wet environment. Wetlands in Riverside County may include vernal pools, palm oases or desert washes.

Policies:

- OS 6.1 During the development review process, ensure compliance with the Clean Water Act’s Section 404 in terms of wetlands mitigation policies and policies concerning fill material in jurisdictional wetlands. (AI 3)
- OS 6.2 Preserve buffer zones around wetlands where feasible and biologically appropriate. (AI 61)
- OS 6.3 Consider wetlands for use as natural water treatment areas that will result in improvement of water quality. (AI 56)

Agricultural Resources

“

Long a major foundation of our economy and our culture, agriculture remains a thriving part of Riverside County. While we have lost some agriculture to other forms of development, other lands have been converted to agriculture. We remain a major agricultural force in California and in the global agricultural market.

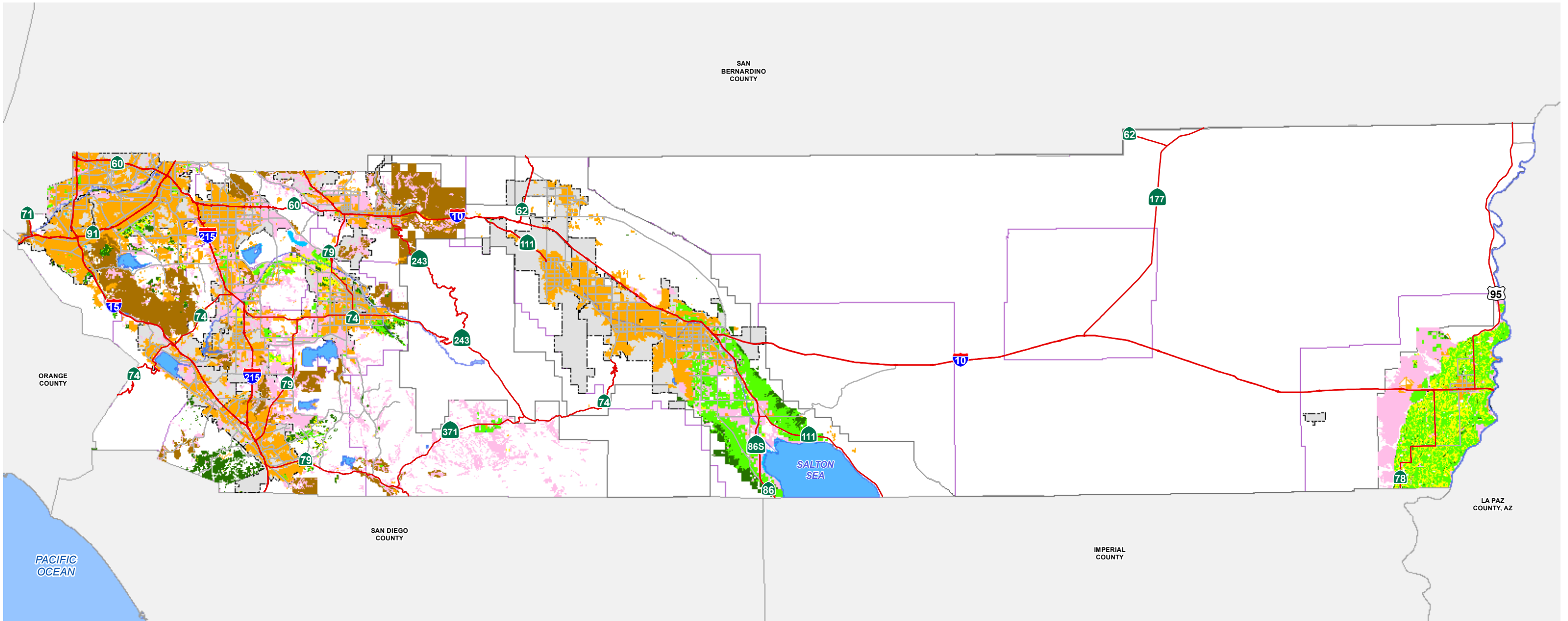
”

B—RCIP Vision Statement

Agriculture is given special recognition as a Foundation Component of the General Plan because of its high socioeconomic value to Riverside County. The two major conservation rationales are to maintain the viability of the agricultural industry, a critical component of Riverside County’s economy, and to preserve the resource represented by farmland—its productive soils and its secondary role as an open space amenity. Soil classifications and the Williamson Act are described below because of their importance in defining agricultural resources.

Soil Classifications

The Countywide Agricultural Resources Map (see Figure OS-2) identifies several classifications of important agricultural lands, as established by state and federal agencies. The four mapped classifications of important farmland are based on criteria for soil characteristics, climatic conditions, and water supply. The criteria include soil type, moisture content, water supply, soil temperature, acidity, salinity, depth, drainage, water table, flooding, slope, erodibility, permeability, rock content, rooting depth, growing season, crop type and value, and other economic factors. The four classifications of important farmlands shown on the Agricultural Resources Map are described as follows.



Data Source: California Department of Conservation, Farmland Mapping and Monitoring Program (2009)

- Prime Farmland
- Farmland of State Importance
- Unique Farmland
- Farmland of Local Importance
- Grazing Land
- Urban Built-up Land
- Water
- Not Mapped
- Highways
- Area Plan Boundary
- City Boundary
- Waterbodies

Figure OS-2

December 16, 2013

Disclaimer: Maps and data are to be used for reference purposes only. Map features are approximate, and are not necessarily accurate to surveying or engineering standards. The County of Riverside makes no warranty or guarantee as to the content (the source is often third party), accuracy, timeliness, or completeness of any of the data provided, and assumes no legal responsibility for the information contained on this map. Any use of this product with respect to accuracy and precision shall be the sole responsibility of the user.



AGRICULTURAL RESOURCES

Path: \\agency\imgis\Projects\Planning\OpenSpace\Elements\60\AgriculturalResources.mxd

This page intentionally left blank

Prime Farmlands

Prime Farmland is land best suited for producing food, feed, forage, fiber, and oilseed crops, and is available for these uses: cropland, pastureland, rangeland, forest land, or other land, but not urban land or water. It has the soil quality, growing season, and moisture supply needed to economically produce sustained high yields of crops when treated and managed (including water management) according to modern farming methods.

Statewide Important Farmlands

Farmland of Statewide Importance is land other than Prime Farmland that has a good combination of physical and biological characteristics for producing food, feed, forage, fiber, and oilseed crops, and is available for these uses (the land could be cropland, pastureland, rangeland, forest land or other land, but not urban land or water).

Unique Farmlands

Unique Farmland is land other than Prime and Statewide Important Farmland that is currently used for the production of specific high value food and fiber crops. It has the special combination of soil quality, location, growing season and moisture supply needed to produce sustained high quality of a specific crop when treated and managed according to modern farming methods. Examples of such economically important crops are citrus, olives, and avocados.

Local Important Farmlands

These farmlands are not covered by the above categories but are of locally significant economic importance. They include the following:


- Lands with soils that would be classified as Prime or Statewide Important Farmlands but lack available irrigation water.
- Lands planted in 1980 or 1981 in dry land grain crops such as barley, oats, and wheat.
- Lands producing major crops for Riverside County but that are not listed as Unique Farmland crops. Such crops are permanent pasture (irrigated), summer squash, okra, eggplant, radishes, and watermelon.
- Dairylands including corrals, pasture, milking facilities, hay and manure storage areas if accompanied with permanent pasture or hayland of 10 acres or more.
- Lands identified by Riverside County with Agriculture land use designations or contracts.
- Lands planted with jojoba that are under cultivation and are of producing age.

Williamson Act

The California Land Conservation Act, better known as the Williamson Act, has been the State of California's premier agricultural land protection program since its enactment in 1965. This program allows owners of agricultural land to have their properties assessed for tax purposes on the basis of agricultural production rather

than current market value. Participation in this program is voluntary, and requires 100 contiguous acres of agricultural land under one or more ownerships to file an application for agricultural preserve status with the Riverside County Planning Department.

After an agricultural preserve has been established, the land within the preserve is automatically restricted to agricultural and compatible uses. In order to have land within an agricultural preserve assessed on the basis of agricultural production rather than full market value, the property owner(s) and the County of Riverside must enter into a Land Conservation Contract. Either party may file a Notice of Non-Renewal, which will cause the contract to expire in 10 years. After the contract has expired, a landowner may apply to remove that property from an agricultural preserve. The landowner also has the option of petitioning the Board of Supervisors for the cancellation of the contract. Cancellation of the contract involves payment of substantial cancellation fees. Land use decisions related to the use of agricultural lands after cancellation of Williamson Act contracts are subject to the provisions of the Certainty System described in Chapter 1 of this General Plan.


 Also refer to the
 Agriculture section of the
Land Use Element.

Since 1998, another option within the Williamson Act Program is the rescission process to cancel a Williamson Act contract and simultaneously dedicate a permanent agricultural conservation easement on other land.

This section focuses on policies for the protection of agricultural lands *and landscapes* as historical, cultural, and scenic resources. These are the valuable qualities that economic transactions do not account for; therefore, they require special protection.

Policies:

OS 7.1 Work with state and federal agencies to periodically update the Agricultural Resources map to reflect current conditions. (AI 11)

OS 7.2 In cooperation with individual farmers, farming organizations, and farmland conservation organizations, the County of Riverside shall employ a variety of agricultural land conservation programs to improve the viability of farms and ranches and thereby ensure the long-term conservation of viable agricultural operations within Riverside County. The County of Riverside shall seek out available funding for farmland conservation. Examples of programs which may be employed include: land trusts; conservation easements (under certain circumstances, these may also provide federal and state tax benefits to farmers); dedication incentives; Land Conservation Contracts; Farmland Security Act contracts; the Agricultural Land Stewardship Program Fund; agricultural education programs; transfer and purchase of development rights; providing adequate incentives (e.g. clustering and density bonuses) to encourage conservation of productive agricultural land in Riverside County’s Incentive Program; and providing various resource incentives to landowners (e.g. establish a reliable and/or less costly supply of irrigation water). (AI 78)

The County of Riverside shall establish a Farmland Protection and Stewardship Committee and the Board of Supervisors shall appoint its members. The Committee shall include members of the farming community as well as other individuals and organizations committed to farmland protections and stewardship. The Committee shall develop a strategy to preserve agricultural land within Riverside County and shall identify and prioritize agricultural lands for conservation. This strategy shall not only address the preservation of agricultural land but shall also promote sustainable agriculture within Riverside County. In developing its strategy, the Committee shall

consider an array of proven techniques and, where necessary, adapt these techniques to address the unique conditions faced by the farming community within Riverside County. Riverside County staff shall assist the Committee in accomplishing its task. Riverside County Departments, that may be called upon to assist the Committee, include, but are not limited to the following: the Agricultural Commissioner, Planning Department, Assessor's Office and County Counsel. In developing its strategy, the Committee shall consult government and private organizations with expertise in farmland protection. These organizations may include, but are not limited to, the following: USDA Natural Resources Conservation Service; State Department of Conservation and its Division of Land Resource Protection; University of California Sustainable Agriculture Research and Education Program; the University of California Cooperative Extension; The Nature Conservancy; American Farmland Trust; The Conservation Fund; the Trust for Public Land; and the Land Trust Alliance.

The Committee shall, from time to time, recommend to the Board of Supervisors the adoption of policies and/or regulation that it finds will further the goals of the farmland protection and stewardship. The Committee shall also advise the Board of Supervisors regarding proposed policies that curb urban sprawl and the accompanying conversion of agricultural land to urban development, and that support and sustain continued agriculture. Planning policies that may benefit farmland conservation and fall within the purview of the Committee for review include measures to promote efficient development in and around existing communities including clustering, incentive programs, transfer of development rights, and other planning tools.

- OS 7.3 Encourage conservation of productive agricultural lands and preservation of prime agricultural lands. (AI 3, 78)
- OS 7.4 Encourage landowners to participate in programs that reduce soil erosion, improve soil quality, and address issues that relate to pest management. To this end, the County of Riverside shall promote coordination between the Natural Resources Conservation Service, Resource Conservation Districts, UC Cooperative Extension, and other agencies and organizations.
- OS 7.5 Encourage the combination of agriculture with other compatible open space uses in order to provide an economic advantage to agriculture. Allow by right, in areas designated Agriculture, activities related to the production of food and fiber, and support uses incidental and secondary to the *on-site* agricultural operation. (AI 1)

Forest Resources

Both of the major forests in Riverside County, the Cleveland and San Bernardino National Forests, are part of the *Sierra Mountain Sierran-montane* range (see ~~Figure OS-3 Parks, Forests and Recreation Areas, Figure OS-3a Forestry Resources Western Riverside County and Figure OS-3b Forestry Resources Eastern County~~). These forests occur on all of the higher mountain ranges of the Pacific Coast region, from southern Oregon to northern Baja California. At lower elevations, these forests commonly border mixed evergreen forest, oak woodland, and chaparral.

Policies in this section seek to protect forest resources in the Cleveland and San Bernardino National Forests. This can be accomplished through careful management of the forest ecosystem, protection of forest resources, and



The **montane forest** is the most complex bio-region in North America, though they can be found all over the world. Parts of Riverside County are within the Sierran Montane bio-region. These bio-regions are characterized by winter snows and summer fires, conifer species, and a great diversity of animal species.

discouragement of the development of land uses that conflict with valuable conservation of forest land.

Policies:

- OS 8.1 Cooperate with federal and state agencies to achieve the sustainable conservation of forest land as a means of providing open space and protecting natural resources and habitat lands included within the MSHCPs. (AI 3)
- OS 8.2 Support conservation programs to reforest privately held forest lands.

Vegetation

“

Native habitat for plants and animals endemic to this area that make up such important part of our natural heritage now have interconnected spaces in a number of locations that allow these natural communities to prosper and be sustained.

”

RCIP Vision Statement

The vegetation/flora of Riverside County is exceedingly diverse in its size, shape and form, yet various species share a common unity in their adaptation to climate and environmental conditions. Further, habitat areas are strongly characterized by flora, in addition to the fauna/animal life, that thrives within the vegetation. Although ecological conditions may fluctuate and affect various plant communities, these natural changes occur gradually, with most species adapting by changing their physical form and structure. Over thousands of years, both the landscape and the plants upon it have slowly evolved together, so that those plant species with the best record of survival in a specific setting have usually become the most prominent identifying characteristics of that setting.

As development continues in Riverside County, the natural succession and evolution of vegetation is altered. This disturbance of vegetation results in changes that are often drastic in wildlife habitats, microclimates, water absorption and purification, soil erosion, fires, and aesthetic quality. The management of vegetation will assure the continued viability of habitat communities within the county for present and future generations. See Figure OS-4a Western Riverside *Natural Communities County-Vegetation*, Figure OS-4b Coachella Valley *Natural Communities* and Figure OS-4c Non-MSHCP *Natural Communities*, for a maps of ~~those Riverside County's~~ *the western portion of the County.*

Native vegetation must be managed in order to maintain the ecological diversity of Riverside County. The policies that follow are intended to protect superior examples of native vegetation resources in conjunction with permitted uses.

Policies:

- OS 9.1 Update the Vegetation Map for Western Riverside County in consultation with the California Department of Fish and ~~Wildlife Game~~, the Natural Diversity Data Base, the United States Forest Service, and other knowledgeable agencies. The County of Riverside shall also provide these agencies with data as needed. (AI 11)
- OS 9.2 Expand Vegetation mapping to include the eastern portion of the County of Riverside. (AI 11)

Chapter 5 Multipurpose Open Space Element

- OS 9.3 Maintain and conserve superior examples of native trees, natural vegetation, stands of established trees, and other features for ecosystem, aesthetic, and water conservation purposes. (AI 3, 79)
- OS 9.4 Conserve the oak tree resources in the county of Riverside. (AI 3, 77, 78)
- OS 9.5 Encourage research and education on the effects of smog and other forms of pollution on human health and on natural vegetation.
- OS 9.6 Conserve important traditional Native American plant gathering resource areas.*

Renewable Energy

Conservation policies in this element direct the protection of Riverside County's physical resources as well as its energy resources, including renewable energy. This category of energy resources includes wind, solar, geothermal, and biomass resources. Although the current use of these resources is not wide-spread, they have considerable potential. Renewable energy can be developed as a substitute for oil, natural gas, and other limited energy supplies used for electricity generation, and to reduce consumption of these supplies. *See Figure OS-5 Renewable Energy Resources, for a map of Riverside County's renewable energy resources.* Also refer to the Energy Conservation policies in the Energy Resources section of this element.

Wind Energy

Wind energy generation installation, known also as Wind Energy Conversion Systems (WECS), ~~is are~~ a well-established industry in the San Geronio Pass and Coachella Valley areas of Riverside County. General regulatory issues to be considered in relation to wind energy are aesthetics, safety, noise, air navigation interferences, land use, wildlife and general ecology, slopes and erosion, PM₁₀ and dust control, wind access and equity.

Policies:

- OS 10.1 Provide for orderly and efficient wind energy development in a manner that maximizes beneficial uses of the wind resource and minimizes detrimental effects to the residents and the environment of Riverside the county.
- OS 10.2 Continue Riverside the County's Wind Implementation Monitoring Program (WIMP) in order to study the evolution of wind energy technology, identify means to solve environmental and community impacts, and provide for an ability to respond with changes in Riverside the County's regulatory structure. (AI 72)

Solar Energy

Solar radiation in the form of sunlight can be utilized for energy production in two ways. Active solar systems involve the use of mechanical devices to convert solar energy to heat or electricity. Passive solar systems utilize natural heating and cooling from the sun through building orientation and building design techniques.

Policies:

- OS 11.1 Enforce the *state* Solar Shade Control Act, which promotes all feasible means of energy conservation and all feasible uses of alternative energy supply sources. (AI 62, 65, 66, 70)

- OS 11.2 Support and encourage voluntary efforts to provide active and passive solar access opportunities in new developments. (AI 63, 64)
- OS 11.3 Permit and encourage the use of passive solar devices and other state-of-the-art energy resources. (AI 62, 63, 64)
- OS 11.4 Encourage site-planning and building design that maximizes solar energy use/potential in future development applications. (AI 70)*



“A Geothermal resources” mean the natural heat of the earth, the energy, in whatever form, below the surface of the earth present in, resulting from, or created by, or that may be extracted from, such natural heat, and all minerals in solution or other products obtained from naturally heated fluids, brines, associated gases, and steam, in whatever form, found below the surface of the earth, but excluding oil, hydrocarbon gas or other hydrocarbon substances.

Geothermal Resources

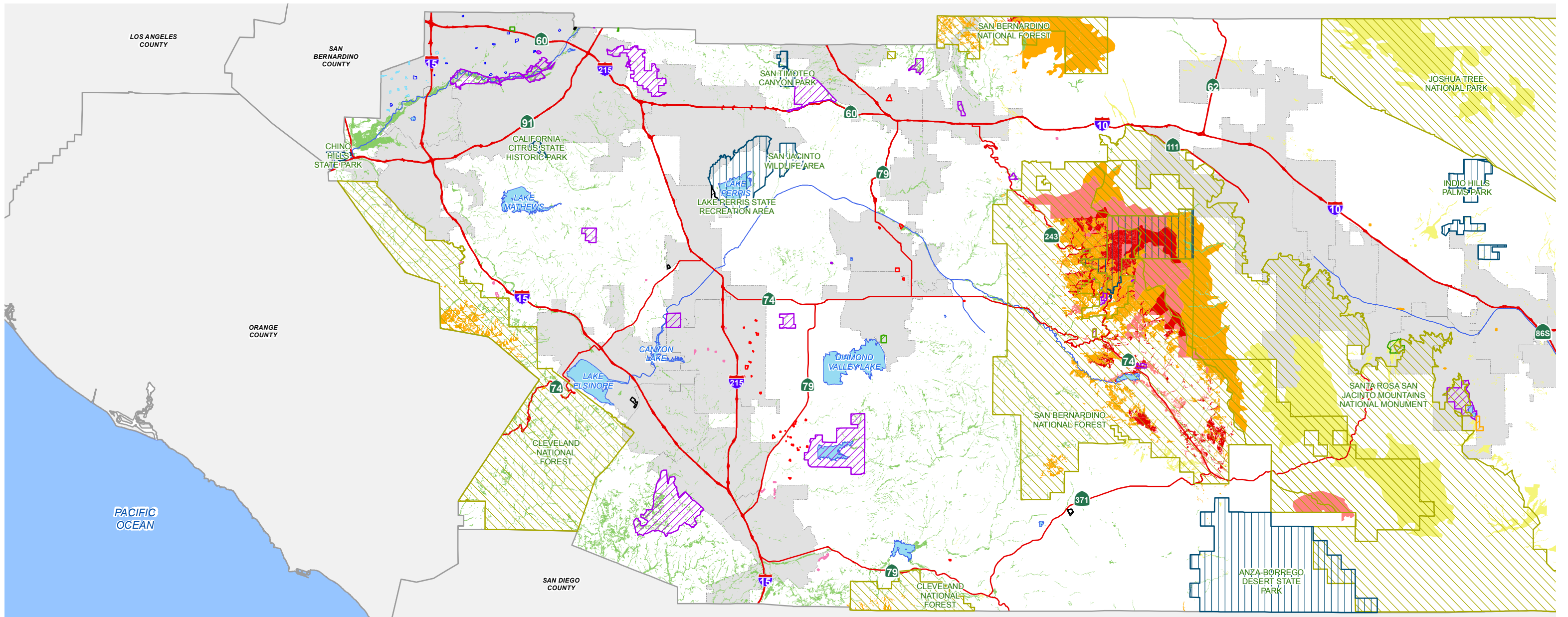
Geothermal resources can be used for electricity production as geothermal steam can be used to run turbines. The exploitation of these resources, however, is frequently accompanied by detrimental impacts on the environment. Among these are the emission of toxic gases and chemical substances that result in the degradation of air quality, the threat of water pollution, damage to living organisms, and hazards to public health. Additional problems arise from the heavily industrial character of geothermal operations for electrical generation; the frequent occurrence of exceptional natural, scenic, and archaeological values in geothermal resource areas; and the adverse effects that geothermal fluid removal may have on nearby hot springs and other natural thermal features. Currently there is no active geothermal energy production in the county, though geothermal resources are known to exist in the county.

Policies:

- OS 12.1 Allow for the development of non-electrical, direct heat uses of geothermal heat and fluids for space, agricultural, and industrial heating in situations and localities where naturally occurring hydrothermal features will not be degraded. (AI 71)

The following policies direct the use of present technologies and the extraction and conversion of energy from geothermal fluid and steam reservoirs:

- OS 12.2 Base all geothermal decisions on appropriate data relating to anticipated environmental, cultural, aesthetic, archaeological and social impacts.
- OS 12.3 Weigh the benefits of geothermal as a viable energy source against the protection of hot springs, geysers, thermal pools, and other thermal features for their ecological, educational, and recreational values.
- OS 12.4 Permit geothermal heat utilization for space heating in buildings.



Data Source: California Native Plant Society (2008)
 Riverside County (2013), Riverside County Cities (2013),
 California Department of Parks and Recreation (2015), and
 USDA Forest Service (2013)

- | | | | |
|--|---|---------------------------|-------------|
| Community Parks - Riverside County Regional Park and Open Space District | Jurupa Community Service District | High Coniferous Forests | Highways |
| County Parks - Regional Park and Open-Space District | Off Road Vehicle | Coniferous Forests | Cities |
| Desert Recreational District | Others | Montane Forests | Waterbodies |
| Federal | State | Lowland Forests/Woodlands | |
| Jurupa Area Recreation and Park District | Valleywide Recreation and Park District | Desert Woodlands | |

Figure OS-3a

December 24, 2014

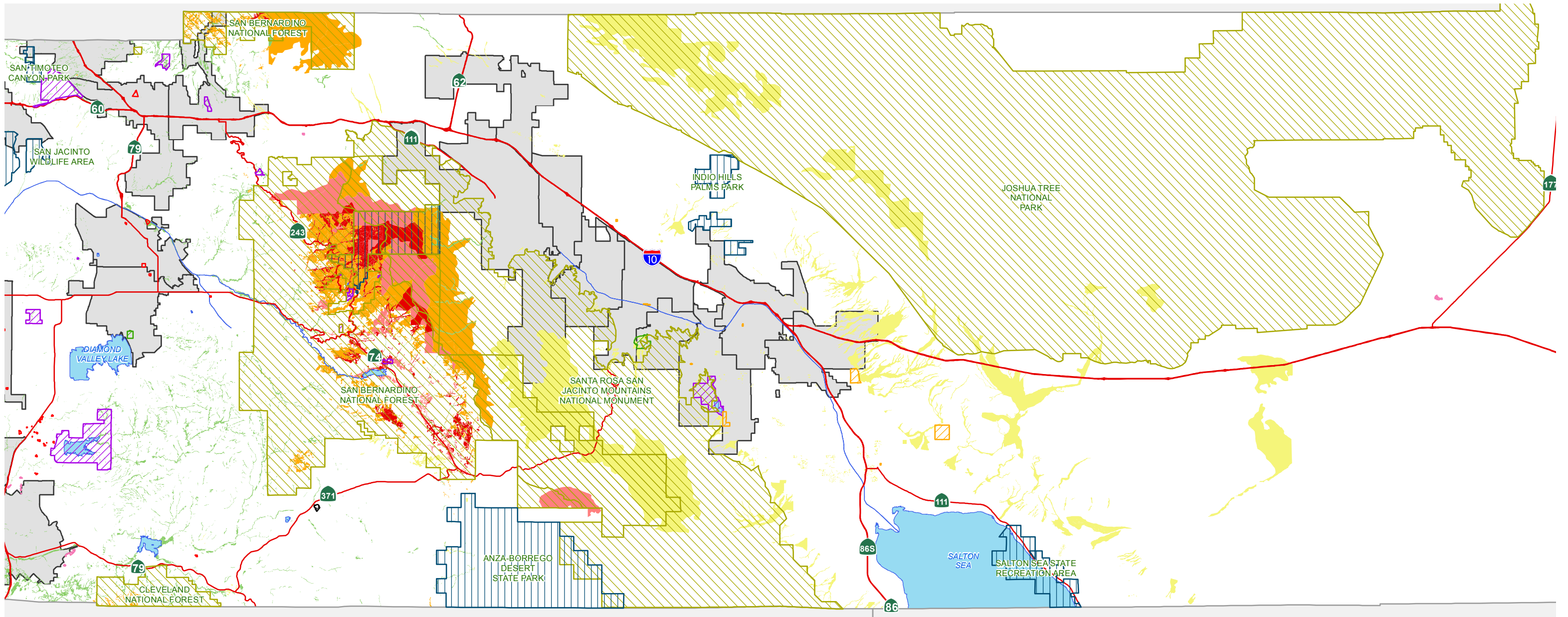
Disclaimer: Maps and data are to be used for reference purposes only. Map features are approximate, and are not necessarily accurate to surveying or engineering standards. The County of Riverside makes no warranty or guarantee as to the content (the source is often third party), accuracy, timeliness, or completeness of any of the data provided, and assumes no legal responsibility for the information contained on this map. Any use of this product with respect to accuracy and precision shall be the sole responsibility of the user.



**FORESTRY RESOURCES WESTERN
 RIVERSIDE COUNTY PARKS, FORESTS,
 AND RECREATION AREAS**

Path: \\agency\IT\GIS\Projects\Planning\GIS\MapServer\Element\60\ForestryResources_West_New.mxd

This page intentionally left blank



Data Source: California Native Plant Society (2008)
 Riverside County (2013), Riverside County Cities (2013),
 California Department of Parks and Recreation (2015), and
 USDA Forest Service (2013)

- | | | | |
|--|---|---------------------------|-------------|
| Community Parks - Riverside County Regional Park and Open Space District | Jurupa Community Service District | High Coniferous Forests | Highways |
| County Parks - Regional Park and Open-Space District | Off Road Vehicle | Coniferous Forests | Cities |
| Desert Recreational District | Others | Montane Forests | Waterbodies |
| Federal | State | Lowland Forests/Woodlands | |
| Jurupa Area Recreation and Park District | Valleywide Recreation and Park District | Desert Woodlands | |

Figure OS-3b

December 24, 2014
 Miles

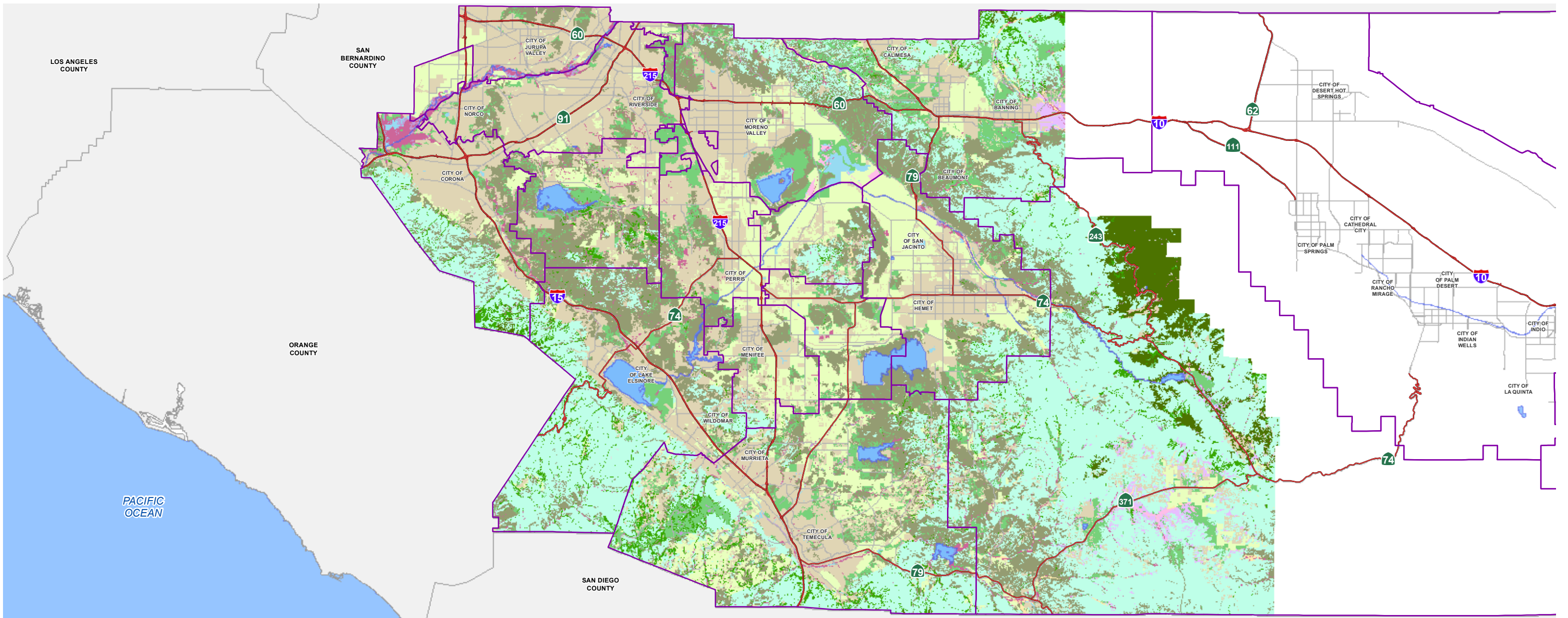
Disclaimer: Maps and data are to be used for reference purposes only. Map features are approximate, and are not necessarily accurate to surveying or engineering standards. The County of Riverside makes no warranty or guarantee as to the content (the source is often third party), accuracy, timeliness, or completeness of any of the data provided, and assumes no legal responsibility for the information contained on this map. Any use of this product with respect to accuracy and precision shall be the sole responsibility of the user.



FORESTRY RESOURCES EASTERN RIVERSIDE COUNTY PARKS, FORESTS, AND RECREATION AREAS

Path: \\agency\TLM\GIS\Projects\Planning\OpenSpaceElement\60\ForestResources_East_New.mxd

This page intentionally left blank



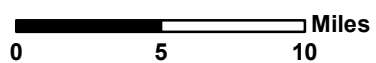
Data Source: California Native Plant Species Survey (2005)

- | | | |
|--------------------------|--|--------------------|
| Agricultural Land | Grassland | Highways |
| Barren | Meadows, Marshes, Playas, and Vernal Pools | Area Plan Boundary |
| Chaparral | Montane Coniferous Forest | Waterbodies |
| Cismontane Alkali Marsh | Riparian Scrub, Woodland, Forest | |
| Coastal Sage Scrub | Riversidean Alluvial Fan Sage Scrub | |
| Desert Scrub | Water | |
| Developed/Disturbed Land | Woodland and Forests | |

Figure OS-4a



December 16, 2013



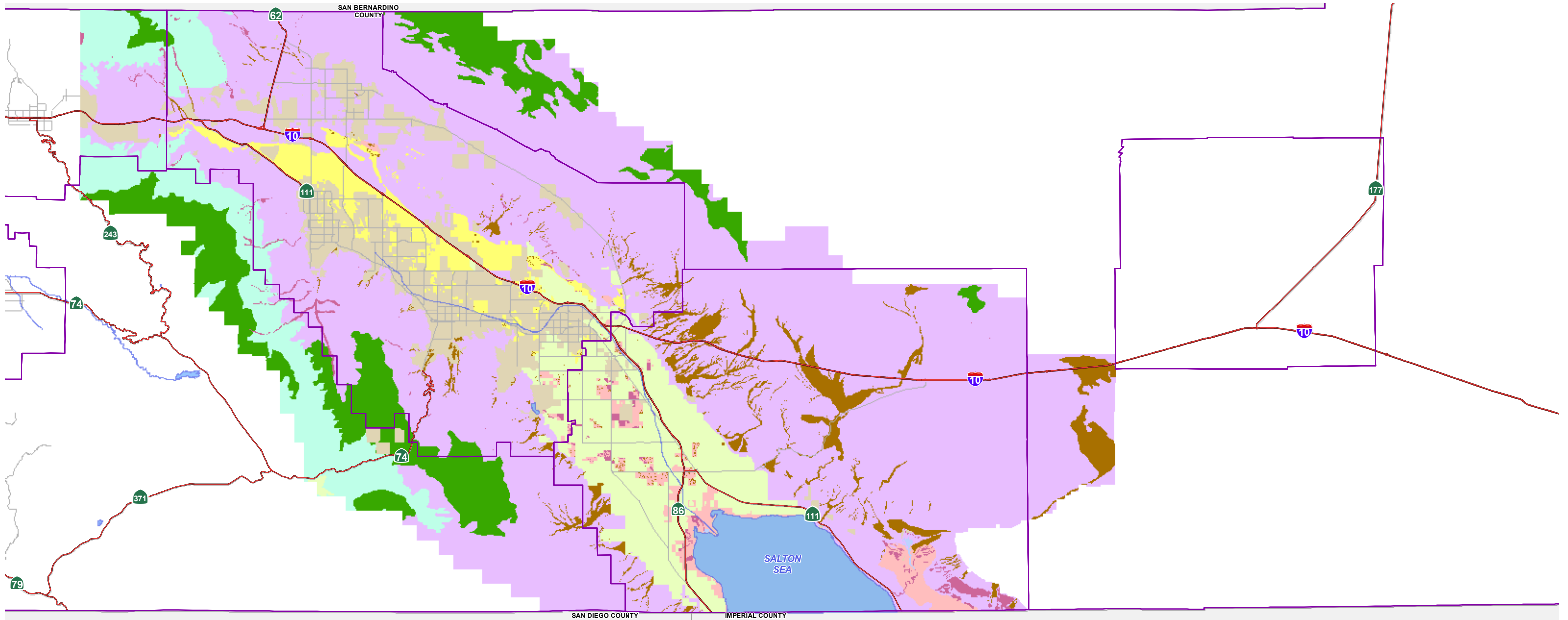
Disclaimer: Maps and data are to be used for reference purposes only. Map features are approximate, and are not necessarily accurate to surveying or engineering standards. The County of Riverside makes no warranty or guarantee as to the content (the source is often third party), accuracy, timeliness, or completeness of any of the data provided, and assumes no legal responsibility for the information contained on this map. Any use of this product with respect to accuracy and precision shall be the sole responsibility of the user.



WESTERN RIVERSIDE COUNTY NATURAL COMMUNITIES VEGETATION

I:\agency\img\img\Projects\Planning\SafetyElement\Substance.mxd

This page intentionally left blank



Data Source: California Native Plant Species Survey (2005)

- | | | |
|---------------------------------|--|--------------------|
| Agriculture | Dry Wash Woodland and Mesquite Communities | Highways |
| Chaparral Communities | Marsh Communities | Area Plan Boundary |
| Desert Alkali Scrub Communities | Sand Dunes and Sand Fields | Waterbodies |
| Desert Scrub Communities | Woodland and Forest Communities | |
| Developed Areas | Riparian Communities | |

Figure OS-4b

December 16, 2013
 Miles

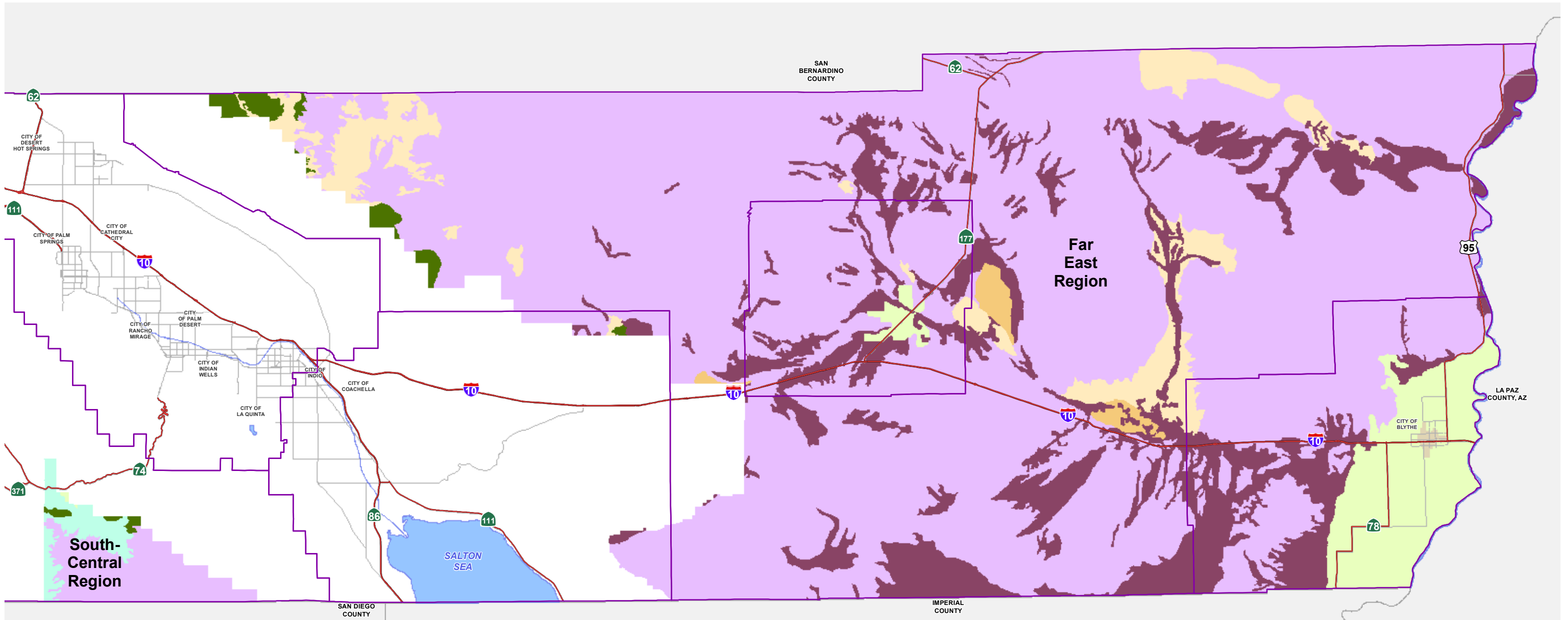
Disclaimer: Maps and data are to be used for reference purposes only. Map features are approximate, and are not necessarily accurate to surveying or engineering standards. The County of Riverside makes no warranty or guarantee as to the content (the source is often third party), accuracy, timeliness, or completeness of any of the data provided, and assumes no legal responsibility for the information contained on this map. Any use of this product with respect to accuracy and precision shall be the sole responsibility of the user.



**COACHELLA VALLEY
NATURAL COMMUNITIES**

I:\agency\img\proj\planning\SafetyElement\Substance.mxd

This page intentionally left blank



Data Source: LSA Associates (2011)

- Agricultural Land
- Chaparral
- Mojavean and Sonoran Desert Scrub
- Alkali Playa
- Desert Dune Communities
- Coniferous Woodland/Forest
- Urban/Disturbed
- Riparian and Bottomland
- Meadow and Marsh
- Highways
- Area Plan Boundary
- Waterbodies

Figure OS-4c

December 16, 2013

Miles

0 5 10

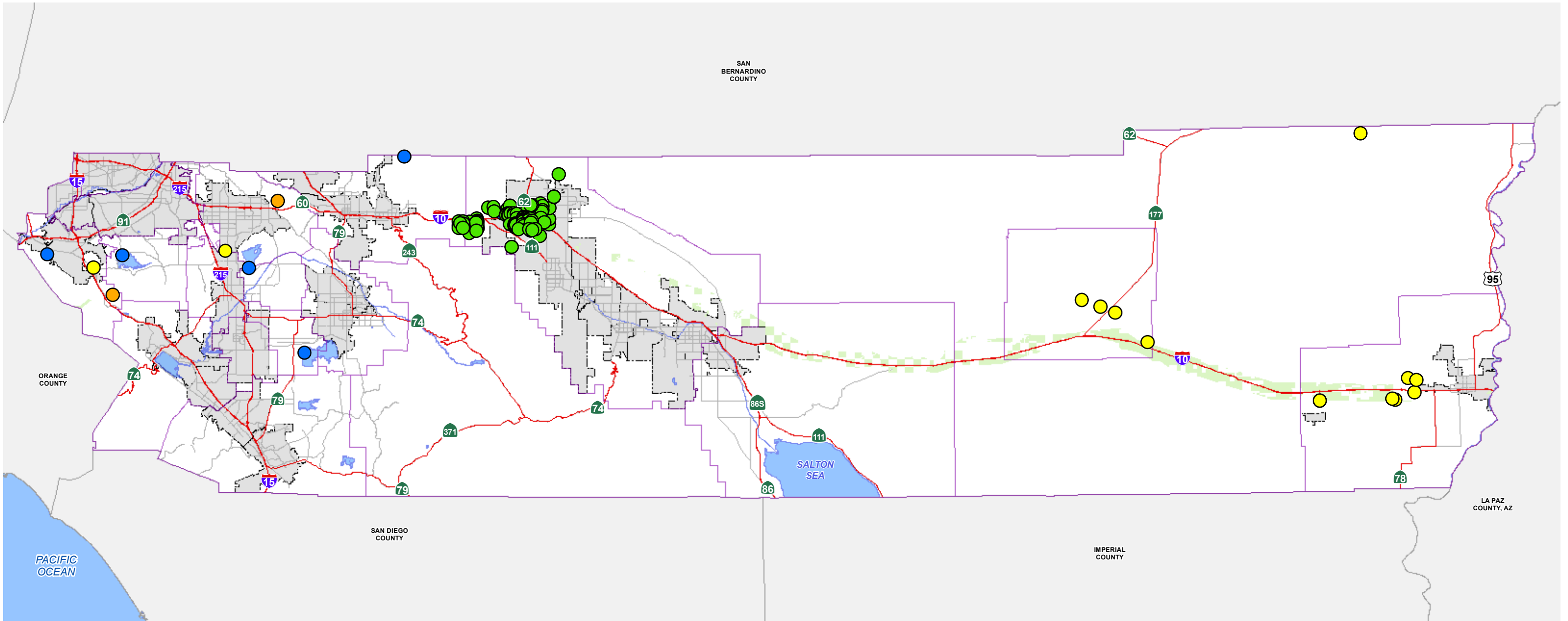
Disclaimer: Maps and data are to be used for reference purposes only. Map features are approximate, and are not necessarily accurate to surveying or engineering standards. The County of Riverside makes no warranty or guarantee as to the content (the source is often third party), accuracy, timeliness, or completeness of any of the data provided, and assumes no legal responsibility for the information contained on this map. Any use of this product with respect to accuracy and precision shall be the sole responsibility of the user.



**NON-MSHCP
NATURAL COMMUNITIES**

Path: \\agency\magas\Projects\Planning\OpenSpace\Element80\Vegetation_East.mxd

This page intentionally left blank



Data Source: California Department of Conservation (2013) and Riverside County (2013)

- Renewable Energy Facilities**
- Biomass
 - Hydro
 - Solar
 - Wind
- Energy Right-of-Way Corridors**
- Energy Right-of-Way Corridors
- Area Plan Boundary**
- Area Plan Boundary
 - City Boundary
 - Waterbodies
 - Highways

Figure OS-5

December 16, 2013

Miles

Disclaimer: Maps and data are to be used for reference purposes only. Map features are approximate, and are not necessarily accurate to surveying or engineering standards. The County of Riverside makes no warranty or guarantee as to the content (the source is often third party), accuracy, timeliness, or completeness of any of the data provided, and assumes no legal responsibility for the information contained on this map. Any use of this product with respect to accuracy and precision shall be the sole responsibility of the user.



**RENEWABLE ENERGY
RESOURCES**

Path: \\agency\img\gis\Projects\Planning\OpenSpace\Element\60\RenewableEnergyResources.mxd

This page intentionally left blank

Biomass Resources

Biomass resources refer to organic materials, either wastes, residues, or specific crops, that can be converted to energy fuel, as a replacement to conventional sources or directly used in combustion processes. Due to agricultural production in the county, resources exist that enable this technology to be more widely employed.

Policies:

OS 13.1 Encourage economic biomass conversion under sensible environmental controls. (AI 71)

Non-Renewable Resources

The non-renewable resources discussed in this element are mineral resources and energy resources. The Mineral Resources section of this element addresses those resources that are classified under the State Mining and Reclamation Act of 1975 (SMARA). The Energy Resources section addresses petroleum resources as well as energy conservation.

Mineral Resources

In addition to agricultural production, mineral extraction is an important component of Riverside County's economy. The County of Riverside has extensive deposits of clay, limestone, iron, sand, and aggregates. Classification of land within California takes place according to a priority list that was established by the State Mining and Geology Board (SMGB) in 1982, or when the SMGB is petitioned to classify a specific area. The SMGB has also established Mineral Resources Zones (MRZ) to designate lands that contain mineral deposits. The State of California has also designated Aggregate Mineral Resource areas within the county. These mineral resource zones are mapped in Figure OS-5 OS-6.

The classifications used by the State of California to define MRZs are as follows:

- **MRZ-1:** Areas where the available geologic information indicates no significant mineral deposits or a minimal likelihood of significant mineral deposits.
- **MRZ-2a:** Areas where the available geologic information indicates that there are significant mineral deposits.
- **MRZ-2b:** Areas where the available geologic information indicates that there is a likelihood of significant mineral deposits.
- **MRZ-3a:** Areas where the available geologic information indicates that mineral deposits are likely to exist, however, the significance of the deposit is undetermined.



SMARA mandates the classification of valuable lands in order to protect mineral resources within the State of California subject to urban expansion or other irreversible actions. SMARA also allows the state to designate lands containing mineral deposits of regional or statewide significance. The California Division of Mines and Geology (CDMG) has identified a number of significant aggregate resource areas throughout Riverside County.

- **MRZ-4:** Areas where there is not enough information available to determine the presence or absence of mineral deposits.

Mineral deposits in the county are important to many industries, including construction, transportation and chemical processing. The value of mineral deposits within the county is enhanced by their close proximity to urban areas. However, these mineral deposits are endangered by the same urbanization that enhances their value.

Policies in this section seek to conserve areas identified as containing significant mineral deposits and oil and gas resources for potential future use, while promoting the reasonable, safe, and orderly operation of mining and extraction activities within areas designated for such use, where environmental, aesthetic, and adjacent land use compatibility impacts can be adequately mitigated.

The non-renewable characteristic of mineral deposits necessitates the careful and efficient development of mineral resources, in order to prevent the unnecessary waste of these deposits due to careless exploitation and uncontrolled urbanization. Management of these mineral resources will protect not only future development of mineral deposit areas, but will also guide the exploitation of mineral deposits so that adverse impacts caused by mineral extraction will be reduced or eliminated.

Policies:



Also refer to the Open Space-Mineral Resource Land Use Designation policies in the Land Use Element.

- OS 14.1 Require that the operation and reclamation of surface mines be consistent with the State Surface Mining and Reclamation Act (SMARA) and ~~Riverside~~ County Development Code provisions.
- OS 14.2 Restrict incompatible land uses within the impact area of existing or potential surface mining areas.
- OS 14.3 ~~Prohibit Restrict~~ land uses incompatible with mineral resource recovery within areas designated Open Space-Mineral Resources *and within areas designated by the State Mining and Geology Board as being of regional or statewide significance.* (AI 11)



Oil and gas seeps are natural springs where liquid and gaseous hydrocarbons (hydrogen-carbon compounds) leak out of the ground.

- OS 14.4 ~~The Riverside~~ County Geologist shall impose conditions as necessary on ~~proposed~~ mining operations ~~projects~~ to minimize or eliminate the potential adverse impact of mining operations on surrounding properties, and environmental resources.
- OS 14.5 Require that new non-mining land uses adjacent to existing mining operations be designed to provide a buffer between the new development and the mining operations. The buffer distance shall be based on an evaluation of noise, aesthetics, drainage, operating conditions, biological resources, topography, lighting, traffic, operating hours, and air quality. *The same standards shall apply to non-mining land uses within or adjacent to areas classified by the State Geologist as MRZ-2a.*

Chapter 5 Multipurpose Open Space Element

- OS 14.6 Accept California Land Conservation (Williamson Act) contracts on land identified by the [State of California State](#) as containing significant mineral deposits subject to the use and acreage limitations established by the County ~~of Riverside~~.

Energy Resources

Energy resources provide the power necessary to maintain the quality of life enjoyed by most Riverside County residents. Many of the energy resources used within the county are non-renewable. Electricity and natural gas are the primary sources of household energy, while fossil fuels are the primary source of energy for most modes of transportation. Energy conservation and the substitution of renewable resources should be encouraged if these resources are to be preserved for Riverside County's future generations.

Petroleum Resources

Riverside County's petroleum resources are deposited in the form of oil and gas seeps. The State Division of Oil and Gas does not report significant or active petroleum extraction in the county. Should extraction activities be undertaken in the future, the following policy provides direction for the siting of oil and gas facilities.

Policies:

- OS 15.1 Enforce California Division of Oil and Gas policies that direct the siting of oil and gas facilities in urban and non-urban areas.
- OS 15.2 Development of renewable resources should be encouraged.

Energy Conservation

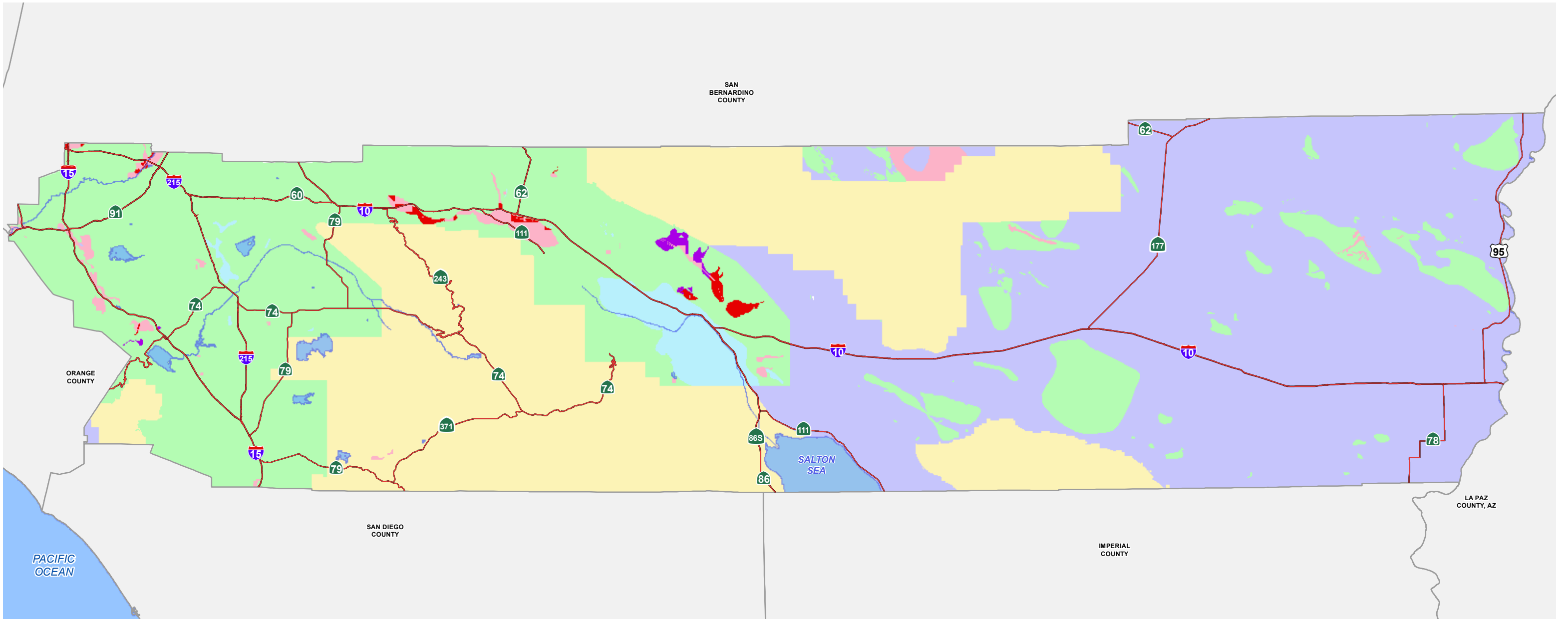
Conservation is an important component of using energy resources in an efficient manner. Lowering energy demand by conserving both renewable and non-renewable energy is critical. Sensible energy conservation and design practices can also mitigate the "Aheat island" effects of urban development that increase local temperatures and result in increased energy demand.

In conjunction with the tactics proposed by the Southern California Association of Government's Regional Air Quality Management Plan, the following policies address energy conservation in Riverside County.

Policies:

- OS 16.1 Continue to implement Title 24 of the *California Code of Regulations (the "California Building Standards Code")* ~~in~~ *particularly Part 6 (the California Energy Code) and Part 11 (the California Green Building Standards Code), as amended and adopted pursuant to Riverside County ordinance State Building Code.* Establish mechanisms and incentives to encourage architects and builders to exceed the energy efficiency standards of *within CCR* Title 24. (AI 62)
- OS 16.2 Specify energy efficient materials and systems, including shade design technologies, for [Riverside](#) county buildings. (AI 68, 70)
- OS 16.3 Implement public transportation systems that utilize alternative fuels when possible, as well as associated urban design measures that support alternatives to private automobile use.

- OS 16.4 Undertake proper maintenance of [Riverside](#) County physical facilities to ensure that optimum energy conservation is achieved.
- OS 16.5 Utilize federal, state, and utility company programs that encourage energy conservation. (AI 63, 64)
- OS 16.6 Assist public buildings and institutions in converting asphalt to greenspace to address the heat island effect.
- OS 16.7 Promote purchasing of energy-efficient equipment based on a fair return on investment, and use energy-savings estimates as one basis for purchasing decisions for major energy-using devices. (AI 68, 69)
- OS 16.8 Promote coordination of new public facilities with mass transit service and other alternative transportation services, including bicycles, and design structures to enhance mass transit, bicycle, and pedestrian use.
- OS 16.9 Encourage increased use of passive, solar design and day-lighting in existing and new structures. (AI 62, 63, 64, 65, 70)
- OS 16.10 Encourage installation and use of cogenerating systems where they are cost-effective and appropriate. (AI 62, 70)
- OS 16.11 Provide incentives, such as transfer of development rights and clustering, to private developments that provide energy efficient site design.*
- OS 16.12 Consider energy efficient site design and construction techniques in renovation, construction or procurement of leased spaces.*
- OS 16.13 Encourage installation and use of new technology at existing facilities or the establishment of new waste-reduction facilities, where cost-effective and appropriate, to ensure that optimum energy conservation is achieved.*
- OS 16.14 Coordinate energy conservation activities with the [Riverside](#) County Climate Action Plan (CAP) as decreasing energy usage also helps reduce carbon emissions.*



Data Source: California Geological Survey (2009)

Mineral Resource Zones

- MRZ-1 (No significant mineral deposits)
- MRZ-2 (Known or inferred significant mineral resources)
- MRZ-3 (Significance of mineral deposits undetermined)
- MRZ-4 (Presence and significance of mineral deposits undetermined)
- Unstudied (No MRZ designation issued)

State Designated Sectors

- Significant
- Proposed as Significant
- Highways
- Waterbodies

Figure OS-6

December 16, 2013
 Miles

Disclaimer: Maps and data are to be used for reference purposes only. Map features are approximate, and are not necessarily accurate to surveying or engineering standards. The County of Riverside makes no warranty or guarantee as to the content (the source is often third party), accuracy, timeliness, or completeness of any of the data provided, and assumes no legal responsibility for the information contained on this map. Any use of this product with respect to accuracy and precision shall be the sole responsibility of the user.



MINERAL RESOURCE ZONES

Agency\Images\Projects\Planning\SafetyElement\Substance.mxd

This page intentionally left blank

Preservation

The RCIP Vision directs that,

“Preserved multi-purpose open space is viewed as a critical part of the County’s system of public facilities and services required to improve the existing quality of life and accommodate new development. Strategies and incentives for voluntary preservation on private land are an integral part of the County’s policy/regulatory system and are referred to nationwide as model approaches.”

The following set of policies seeks to preserve natural resources that are sensitive, rare, threatened, endangered and irreplaceable. These resources deserve special protection in order to ensure their continued viability and to improve the quality of life for citizens of Riverside County. Open space preservation can serve many purposes, including the preservation and enhancement of environmental resources for both ecological and recreational purposes, as well as the proper management of environmental hazards.

Multiple Species Habitat Conservation Plans

As urbanization has spread into Riverside County, community development has not only involved the local land use planning process, but coordination with state and federal wildlife agencies in order to obtain “take permits” for impacts to threatened and endangered species. The United States Fish and Wildlife Service and California Department of Fish and ~~Wildlife Game~~, hereafter “Wildlife Agencies,” have authority to regulate the “take” of threatened and endangered species. The process of issuing “take permits,” however, has resulted in costly delays for development interests in addition to the assemblage of piecemeal reserve systems addressing only the needs of single species. Mitigation lands have been preserved, but these have generally been small, unconnected habitat areas in which it is more difficult to sustain wildlife mobility, genetic flow, or ecosystem health. Instead, large interconnected natural areas are preferred in order to assure that Riverside County's entire ecosystem has the potential to remain healthy.

To address the issues of wildlife health and sustainability, the County of Riverside has participated in or directed the development of two Multiple Species Habitat Conservation Plans (MSHCP's). These ~~proposed~~ MSHCP's are stake-holder driven, comprehensive, and multi-jurisdictional, and focus on the conservation of both species and associated habitats, in order to address biological and ecological diversity conservation needs and provide mitigation for the impacts of development in Riverside County. These plans are two of several large multi-jurisdictional habitat planning efforts within Southern California which have been developed under the overall goal of maintaining biological diversity within a rapidly urbanizing region. The Western Riverside County MSHCP has been adopted by the County of Riverside and, ~~as of October 7, 2003, awaits approval~~ *approved* by other jurisdictions and the Wildlife Agencies. The Coachella Valley Association of Governments’ MSHCP ~~is under preparation~~ *has also been adopted and received its final permit from the U.S. Fish and Wildlife Service on October 1, 2008.*



HCP-Habitat Conservation Plan

NEPA-National Environmental Policy Act

NCCP-Natural Communities Conservation Plan

CEQA-California Environmental Quality Act

CESA-California Endangered Species Act

FESA-Federal Endangered Species Act

The ~~proposed~~ MSHCPs ~~will~~ allow the County of Riverside and other local jurisdictions the ability to manage local land use decisions and maintain economic development flexibility, while providing a coordinated reserve system and implementation program that will facilitate the preservation of biological diversity as well as maintain the region's quality of life. ~~Should these MSHCP's not be adopted, it will be necessary to assess development related impacts and develop associated mitigation measures on a project by project basis.~~

Coachella Valley Association of Governments MSHCP Program Description

The Coachella Valley Association of Governments (CVAG) ~~is preparing~~ *has prepared*, on behalf of its member agencies, ~~a proposed~~ *the Coachella Valley* Multiple Species Habitat Conservation Plan (*CVMSHCP*) that ~~is intended to~~ covers 28-27 species of plants and animals in the Coachella Valley. Currently, this plan proposes to conserve between 200,000 and 250,000 acres of privately owned land through general plan land use designations, zoning/development standards and an aggressive acquisition program, for a total conservation area of between 700,000 to 750,000 acres.

Relationship to Area Plans

The Pass, Eastern Coachella Valley, Western Coachella Valley and REMAP Area Plans ~~would be~~ *are* affected by the CVAG-MSHCP, ~~if it is adopted~~. These area plans contain maps and general information about the ~~proposed~~ MSHCP. Consult the area plans for further information.

Western Riverside County MSHCP Program Description

“
In western Riverside, a high density of rare species coincides with one of the most swiftly urbanizing areas of the country.
 ”

B – Scott Ferguson, Trust for Public Land Senior Project Manager

The ~~proposed~~ Western Riverside County MSHCP encompasses approximately 1.26 million acres (approximately 1,997 square miles). This ~~proposed~~ MSHCP includes unincorporated and incorporated Riverside County land (excluding Indian land) west of the crest of the San Jacinto Mountains to the Orange County line. The plan is the largest HCP ever attempted and covers multiple species and multiple habitats within multiple jurisdictions. The ~~proposed~~ MSHCP covers a diverse landscape from urban cities to undeveloped foothills and montane forests. In addition to the presence of multiple habitats, the plan stretches across the Santa Ana Mountains, Riverside Lowlands, San Jacinto Foothills, San Jacinto Mountains, Aqua Tibia Mountains, Desert Transition and San Bernardino Mountain bio-regions.

This ~~proposed~~ MSHCP ~~is intended to~~ serve as a Habitat Conservation Plan pursuant to Section 10(a)(1)(B) of the Federal Endangered Species Act of 1973, as well as a Natural Communities Conservation Plan under the NCCP Act of 1991. ~~If adopted, it will be~~ *It is* used to allow incidental “take” of plant and animal species identified within the ~~proposed~~ MSHCP. The purpose of

the ~~proposed~~ MSHCP is for the Wildlife Agencies to grant “take authorization” for otherwise lawful actions that may incidentally take or harm individuals of a species outside of preserve areas, in exchange for supporting assembly of a coordinated reserve system. Conservation and management duties, as well as implementation assurances, will be provided by the County of Riverside and other signatory agencies or jurisdictions identified as permittees through a corresponding Implementation Agreement.

A Stakeholder Driven Process

To complement the conservation and management responsibilities assigned to the County of Riverside, a property owner-initiated habitat evaluation and acquisition negotiation process has also been developed for the ~~proposed~~ Western Riverside County MSHCP. The Habitat Evaluation and Acquisition Negotiation Process applies to property which may be needed for inclusion in the MSHCP Reserve or subjected to other MSHCP criteria. Under the ~~proposed~~ incentive-based MSHCP program, the County of Riverside may obtain interests in property needed to implement the MSHCP over time. If it is determined that all or a portion of a property is needed for the MSHCP Reserve, various incentives or monetary compensation may be available to the property owner in exchange for the conveyance of property. Incentives are intended to provide a form of compensation to property owners who convey their property. As a property interest is obtained, it will become part of the MSHCP Reserve.

Relationship to Area Plans

Each area plan that is affected by the ~~proposed~~ Western Riverside County MSHCP contains maps that identify the areas potentially affected by the MSHCP, ~~if it is adopted~~, and identification of plant and animal species to be covered by the plan. Consult the area plans for further information.

Policies:

- OS ~~17.3-17.1~~ Enforce the provisions of applicable MSHCP's, ~~if adopted~~ when conducting review of possible *legislative actions such as general plan amendments, and/or zoning ordinance amendments, etc.* ~~changes~~. (AI 10)
- OS ~~17.4-17.2~~ Enforce the provisions of applicable MSHCP's, ~~if adopted~~, when conducting review of development applications. (AI 10)
- OS ~~17.2-17.3~~ Enforce the provisions of applicable MSHCP's, ~~if adopted~~ when developing transportation or other infrastructure projects that have been designated as covered activities in the applicable MSHCP. (AI 10)
- ~~OS 17.4 — Require the preparation of biological reports in compliance with Riverside County Planning Department Biological Report Guidelines for development related uses that require discretionary approval to assess the impacts of such development and provide mitigation for impacts to biological resources until such time as the CVAG MSHCP and/or Western Riverside County MSHCP are adopted or should one or both MSHCP's not be adopted.~~



The Western Riverside County MSHCP affects the following area plans:

- Eastvale
- Elsinore
- Harvest Valley/Winchester
- Highgrove
- Jurupa
- Lake Mathews/Woodcrest
- Lakeview/Nuevo
- Mead Valley
- Reche Canyon/Badlands
- REMAP
- San Jacinto Valley
- Southwest (SWAP)
- Sun City/Menifee Valley
- Temescal Canyon
- The Pass



The Coachella Valley MSHCP affects the following area plans:

- The Pass
- REMAP
- Western Coachella Valley
- Eastern Coachella Valley
- East County - Desert Area

~~OS 17.5 Establish baseline ratios for mitigating the impacts of development related uses to rare, threatened and endangered species and their associated habitats to be used until such time as the CVAG MSHCP and/or Western Riverside County MSHCP are adopted or should one or both MSHCP's not be adopted.~~



Also refer to the Open Space, Habitat and Natural Resource Protection policies in the Land Use Element and the policies in the Safety Element that seek to preserve environmentally sensitive lands subject to natural hazards.

Environmentally Sensitive Lands

Riverside County's multipurpose open space system will be created and maintained using several different techniques, all related to preservation of significant environmental resources. By preserving multi-species habitat; by creating and maintaining active and passive parks, recreation areas and trail systems; by conserving natural, *cultural* and scenic resources; and avoiding natural hazard areas; a complete system of open space will be achieved that ensures Riverside County's "remarkable environmental setting" remains intact for future generations of citizens to enjoy. This section identifies policies for the preservation of environmentally sensitive land within the County of Riverside, including, but not limited to, the land to be preserved through the MSHCPs.

Policies:

- OS 18.1 Preserve multi-species habitat resources in the County of Riverside through the enforcement of the provisions of applicable MSHCP's, ~~if adopted~~. (AI 10)
- OS 18.2 Provide incentives to landowners that will encourage the protection of significant resources in the county beyond the preservation and/or conservation required to mitigate project impacts. (AI 9)
- OS 18.3 Prohibit the planting or introduction of invasive, non-native species to watercourses, their banks, riparian areas, or buffering setbacks.*
- OS 18.4 Develop standards for the management of private conservation easements and conservation lots in fee title. For areas with watercourses, apply special standards a – f (below) for their protection, and apply standards g-j (below) generally:*
 - a. For conservation lands with watercourses, conform easement boundaries to setback conditions that will preserve natural flows and changes in the natural boundaries of a watercourse and its protective riparian habitat.*
 - b. Use only "open" fencing that permits the movement of wildlife, and limit fencing to locations outside of setbacks to watercourses (no fencing is permitted to cross the banks or channel of a watercourse, unless no other option is available).*
 - c. Allow fuel modification only to the outside of buffering vegetation (riparian vegetation and vegetation on slopes that buffer the watercourse from erosion and storm water pollution).*
 - d. No planting of non-native invasive species is permitted.*
 - e. No lighting of watercourse area is permitted.*

- f. Prohibit the use of pesticides and herbicides known to harm aquatic species and sensitive amphibians.*
- g. Ensure that lands under control of Homeowner's Associations employ an experienced non-profit conservation group or agency to manage/maintain the land.*
- h. Prohibit use of recreational off-road vehicles.*
- i. Prohibit grazing and alterations of vegetation except for fuel and weed management under close supervision of qualified natural lands manager.*
- j. For private conservation lands, especially those within criteria cells of MSHCP areas, ensure that easement and fee title agreements provide funding methods sufficient to manage the land in perpetuity.*

Cultural Resources

Cultural resources are evidence of past human activity that become important for scientific, historic, and/or religious reasons to communities, descendant groups, and individuals. They may include objects, buildings, structures, sites (particularly archaeological sites), areas, places, records, or manuscripts associated with history. Some examples of cultural resources are pioneer homes, buildings, or old wagon roads; structures with unique architecture or designed by a notable architect; prehistoric Native American village sites; pioneering ethnic settlements; historic or prehistoric artifacts or objects; rock inscriptions; human burial sites; battlefields; *railroad water towers, railways and bridges*; prehistoric trails; early mines or important historic industrial sites.

Cultural resources may also include places that have historic or traditional associations or that are important for their natural resources like places where Native Americans have gathered plants for the purpose of making baskets or medicines, places where religious or ceremonial activities have occurred, or places where a significant historic event has occurred. Some of these places may not have physical evidence of their use, but rather may only be recognized through oral history or archival documentation. Other such places may include numerous artifacts and/or ruins above or below ground.

Cultural resources are nonrenewable resources and often yield unique information about past societies and environments, and provide answers for modern day social, scientific, and heritage concerns. The consideration and preservation of important examples of history within Riverside County benefits the public by maintaining historic identity and a sense of place and tradition.

The cultural history of Riverside County is divided chronologically into two primary time periods: the prehistoric and historic, which includes ethnohistoric information. Native American cultures may represent approximately 10,000 years of Riverside County history, which is evidenced in the numerous archaeological resources across the County. Tribal oral history and heritage preservation efforts supplement the scientific investigation of archaeological resources by providing interpretive and geographical information. Native American cultures continue to flourish in Riverside County and take an increasing interest and role in the documentation and preservation of their history.



The California Historic Resources Information System (CHRIS) contains information from surveys of archaeological and cultural resources as well as the built environments. The State Historic Preservation Office (SHPO) coordinates a statewide network of Information Centers that manage and make available survey information for environmental review, planning, and research needs.

“
A major thrust of the multipurpose open space system is the preservation of the components of the ecosystem and landscape that embody the historic character and habitat of the County, even though some areas have been impacted by man-made changes.
 ”

B-RCIP Vision Statement

The County of Riverside also has a rich non-Native American history. Early explorers and settlers (Chinese, European, Mexican, Japanese, and many others) established communities, infrastructure (railroads, canals, etc.), and industries (ranching, mining, agriculture, forestry, recreation, etc.) that shaped the development and identity of the County. The vestiges of their many historic “marks on our land” can still be found today. An initial inventory of Historical Resources in Riverside County was completed and mapped in the 1980’s, as shown in Figure OS-7 ~~OS-6~~, but many more historic resources are known to exist that have not yet been documented. As objects, buildings, and structures continue to age, they may be considered historical resources under local, state, or national laws.

Technical studies prepared by professionally-qualified individuals are often required to identify and evaluate cultural resources as part of the environmental review process associated with proposed development and public project review. These studies have contributed a wealth of knowledge about the prehistory and history of Riverside County and assist the County of Riverside in identifying cultural resources worthy of preservation.

The following policies are intended to ensure that cultural resources are appropriately considered:

Policies:

- OS 19.1 Cultural resources (both prehistoric and historic) are a valued part of the history of the County of Riverside.
- OS 19.2 The County of Riverside shall establish a cultural resources program in consultation with Tribes and the professional cultural resources consulting community. Such a program shall, at a minimum, address each of the following: application processing requirements; information database(s); confidentiality of site locations; content and review of technical studies; professional consultant qualifications and requirements; site monitoring; examples of preservation and mitigation techniques and methods; and the descendant community consultation requirements of local, state and federal law. (AI 144)
- OS 19.3 Review proposed development for the possibility of cultural resources and for compliance with the cultural resources program.
- OS 19.4 To the extent feasible, designate as open space and allocate resources and/or tax credits to prioritize the protection of cultural resources preserved in place or left in an undisturbed state. (AI 145)
- OS 19.5 Exercise sensitivity and respect for human remains from both prehistoric and historic time periods and comply with all applicable laws concerning such remains.

This page intentionally left blank

Paleontological Resources

Paleontological resources are the fossilized biotic remains of ancient environments. They are valued for the information they yield about the history of the earth and its past ecological settings. Riverside County has been inventoried for geologic formations known to potentially contain paleontological resources. Lands with high, low or undetermined potential for finding paleontological resources are mapped on Figure ~~OS-8 OS-7~~, the Paleontological Sensitivity Resources Map. This map is used in the environmental assessment of development proposals and the determination of required impact mitigation.

The following policies are intended to ensure that paleontological resources are appropriately considered:

- OS 19.6 Whenever existing information indicates that a site proposed for development has high paleontological sensitivity as shown on Figure ~~OS-8 OS-7~~, a paleontological resource impact mitigation program (PRIMP) shall be filed with the Riverside County Geologist *prior to site grading*. The PRIMP shall specify the steps to be taken to mitigate impacts to paleontological resources.
- OS 19.7 Whenever existing information indicates that a site proposed for development has low paleontological sensitivity as shown on Figure ~~OS-8 OS-7~~, no direct mitigation is required unless a fossil is encountered during site development. Should a fossil be encountered, the Riverside County Geologist shall be notified and a paleontologist shall be retained by the project proponent. The paleontologist shall document the extent and potential significance of the paleontological resources on the site and establish appropriate mitigation measures for further site development.
- OS 19.8 Whenever existing information indicates that a site proposed for development has undetermined paleontological sensitivity as shown on Figure ~~OS-8 OS-7~~, a report shall be filed with the Riverside County Geologist documenting the extent and potential significance of the paleontological resources on site and identifying mitigation measures for the fossil and for impacts to significant paleontological resources *prior to approval of that department*.
- OS 19.9 Whenever paleontological resources are found, the Riverside County Geologist shall direct them to a facility within Riverside County for their curation, including the Western Science Center in the City of Hemet.*

Open Space, Parks and Recreation

Riverside County incorporates a wide range of open space, parks and recreational areas, including Joshua Tree National Park and major state parks such as Anza-Borrego, the Salton Sea State Recreation Area, and Chino Hills State Park. A variety of county parks also serve residents and visitors in the western portion of Riverside County, as well as in the desert, mountain and Colorado River regions. Riverside County maintains 35 Regional Parks, encompassing roughly 23,317 acres. Other local parks fall under the jurisdiction of Riverside County Recreation and Park Districts and serve the following areas: the Beaumont-Cherry Valley area; the Coachella Valley; the Jurupa area; the Valleywide area incorporating the San Jacinto Valley, the Winchester area, the Menifee Valley, and the Anza Valley. Parks and Recreation Areas in Riverside County have been mapped earlier in this element on Figure OS-3.

“

We value the unusually rich and diverse natural environment with which we are blessed and are committed to maintaining sufficient areas of natural open space to afford the human experience of natural environments as well as sustaining the permanent viability of the unique landforms and ecosystems that define this environment.

”

B-RCIP Vision Statement

Open space and recreation areas offer residents and visitors myriad recreational opportunities while providing a valuable buffer between urbanized areas. The protection and preservation of open space areas from urbanization is an increasingly important issue for the County of Riverside.

The following policies relate to the preservation, use and development of a comprehensive open space system consisting of passive open space areas, and parks and recreation areas that have recreational, ecological and scenic value.

Policies:

The following policies pertain to open space:

OS 20.1 Preserve and maintain open space that protects [Riverside](#) County environmental *and other nonrenewable* resources and maximizes public health and safety in areas where significant environmental hazards and resources exist.

OS 20.2 Prevent unnecessary extension of public facilities, services, and utilities, for urban uses, into Open Space-Conservation designated areas. (AI 74)

The following policies pertain to parks and recreation:

- OS 20.3 Discourage the absorption of dedicated park lands by non-recreational uses, public or private. Where absorption is unavoidable, replace park lands that are absorbed by other uses with similar or improved facilities and programs. (AI 74)
- OS 20.4 Provide for the needs of all people in the system of [Riverside](#) the County recreation sites and facilities, regardless of their socioeconomic status, ethnicity, physical capabilities or age.
- OS 20.5 Require that development of recreation facilities occurs concurrent with other development in an area. (AI 3)
- OS 20.6 Require new development to provide implementation strategies for the funding of both active and passive parks and recreational sites. (AI 3)

Scenic Resources

Scenic resources are an important quality of life component for residents of Riverside County. In general, scenic resources include areas that are visible to the general public and considered visually attractive. In addition to scenic corridors, described below, scenic resources include natural landmarks and prominent or unusual features of the landscape. For example, the Santa Rosa National Monument includes mountains or other natural features with high scenic value. Scenic backdrops include hillsides and ridges that rise above urban or rural areas or highways. Scenic vistas are points, accessible to the general public, that provide a view of the countryside. Following are policies to protect these resources and ensure that future development enhances them.

Policies:

OS 21.1 Identify and conserve the skylines, view corridors, and outstanding scenic vistas within Riverside County. (AI 79)

Scenic Corridors

Many roadway corridors in Riverside County traverse its scenic resources. Enhancing aesthetic experiences for residents and visitors to Riverside County promotes tourism, which is important to Riverside County’s overall economic future. Enhancement and preservation of Riverside County’s scenic resources will require careful application of scenic highway standards along Official Scenic Routes.

Policies that seek to protect and maintain resources in corridors along scenic highways are incorporated into this section. State and county eligible and designated scenic highways are included and mapped in the Circulation Element of the General Plan, as well as in the Circulation section of those area plans where scenic corridors are located.

Policies:


OS 22.1 Design developments within designated scenic highway corridors to balance the objectives of maintaining scenic resources with accommodating compatible land uses. (AI 3)

OS 22.2 Study potential scenic highway corridors for possible inclusion in the Caltrans Scenic Highways Plan.

OS 22.3 Encourage joint efforts among federal, state, and county agencies, and citizen groups to ensure compatible development within scenic corridors.

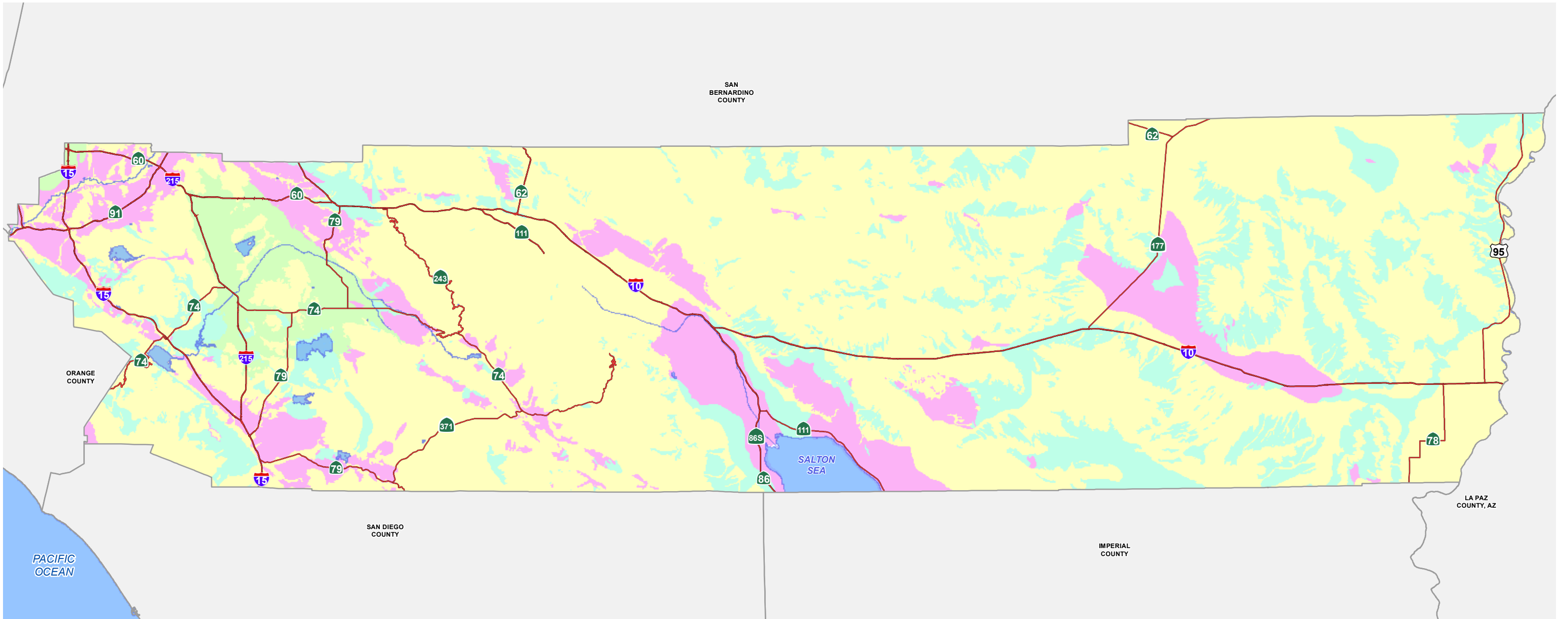
OS 22.4 Impose conditions on development within scenic highway corridors requiring dedication of scenic easements consistent with the Scenic Highways Plan, when it is necessary to preserve unique or special visual features. (AI 3)

OS 22.5 Utilize contour grading and slope rounding to gradually transition graded road slopes into a natural configuration consistent with the topography of the areas within scenic highway corridors.



Also refer to the Scenic Corridor Sections of the Circulation and Land Use Elements.

This page intentionally left blank.



Data Source: LSA Associates (1999)

- High A (Ha)
- High B (Hb)
- Low
- Undetermined
- Highways
- Waterbodies

Figure OS-8

December 16, 2013

0 10 20 Miles

Disclaimer: Maps and data are to be used for reference purposes only. Map features are approximate, and are not necessarily accurate to surveying or engineering standards. The County of Riverside makes no warranty or guarantee as to the content (the source is often third party), accuracy, timeliness, or completeness of any of the data provided, and assumes no legal responsibility for the information contained on this map. Any use of this product with respect to accuracy and precision shall be the sole responsibility of the user.



PALEONTOLOGICAL SENSITIVITY

Agency\Images\Projects\Planning\SafetyElement\Substance.mxd

This page intentionally left blank