


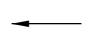


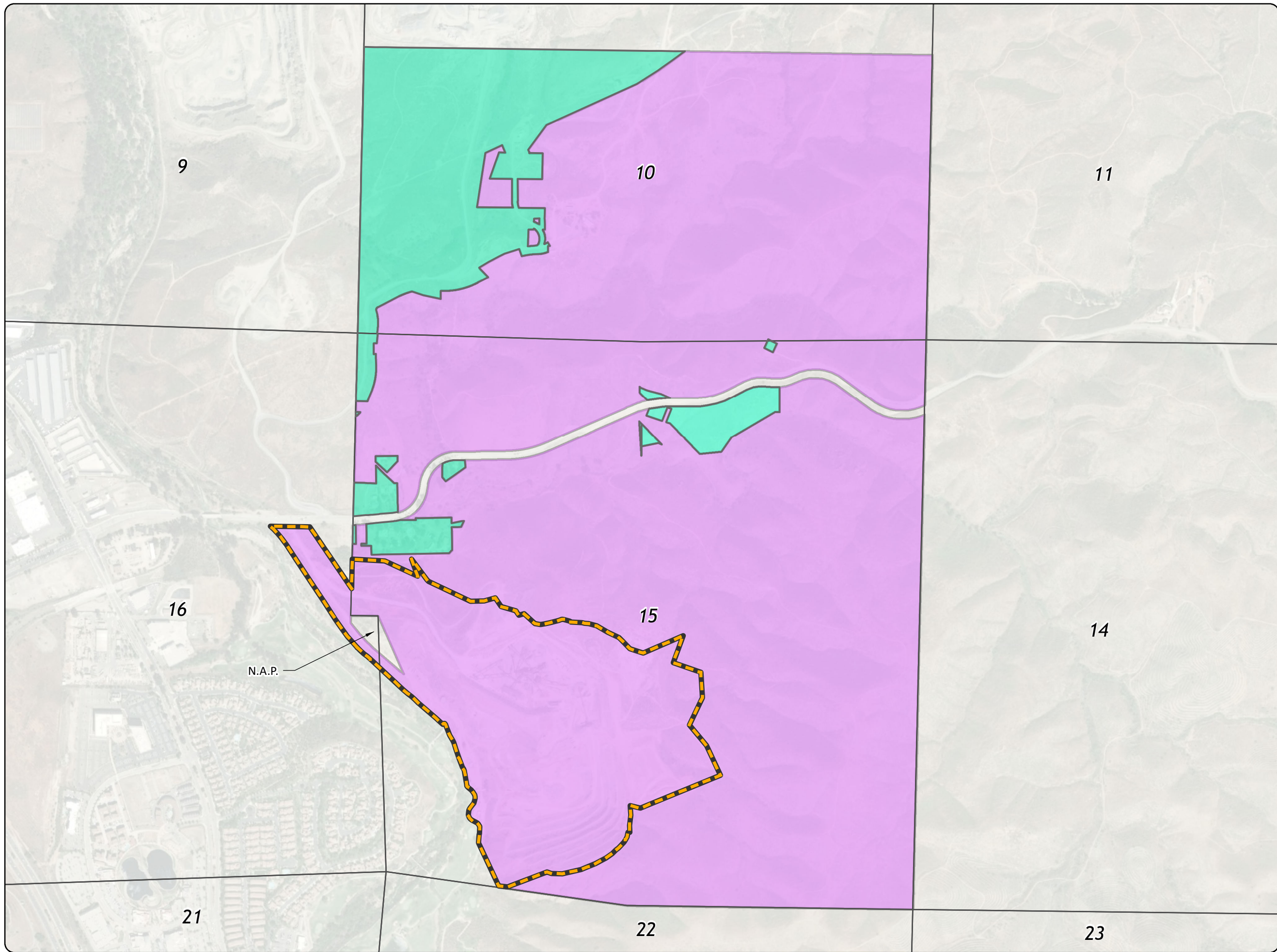
Appendix B-1: Vested Rights Area  
**Figure B-1.3: Comparison of 1949  
 and 2021 HH VRA Boundaries**

Confirmation of Geographic  
 Scope of HH VRA  
 Hubbs/Harlow Quarry  
 Riverside County, California

Legend:

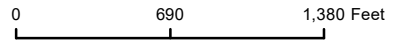
-  RCL118S4 Boundary  
(Vested Rights Confirmed)
-  2021 HH VRA
-  Ownership interests modified  
since original vesting in 1949\*
-  Not a Part (of Robertson's  
Ownership Interest, 1949)

Note:  
 \*RRM is not seeking at this time to confirm vested  
 rights in the areas for which ownership interests  
 have been modified. RRM reserves the right to  
 seek confirmation of vested rights in those areas in  
 the future.



**Graphic revised on 9/15/2022**

Basemap: Source: Esri, Maxar, Earthstar  
 Geographics, and the GIS User Community



*Disclaimer: The data was mapped for planning purposes  
 only. No liability is assumed for accuracy of the data shown.*

Prepared by: Sage Thurmond, Compass Land Group  
 3140 Peacekeeper Way #102, McClellan Park, CA 95652

