




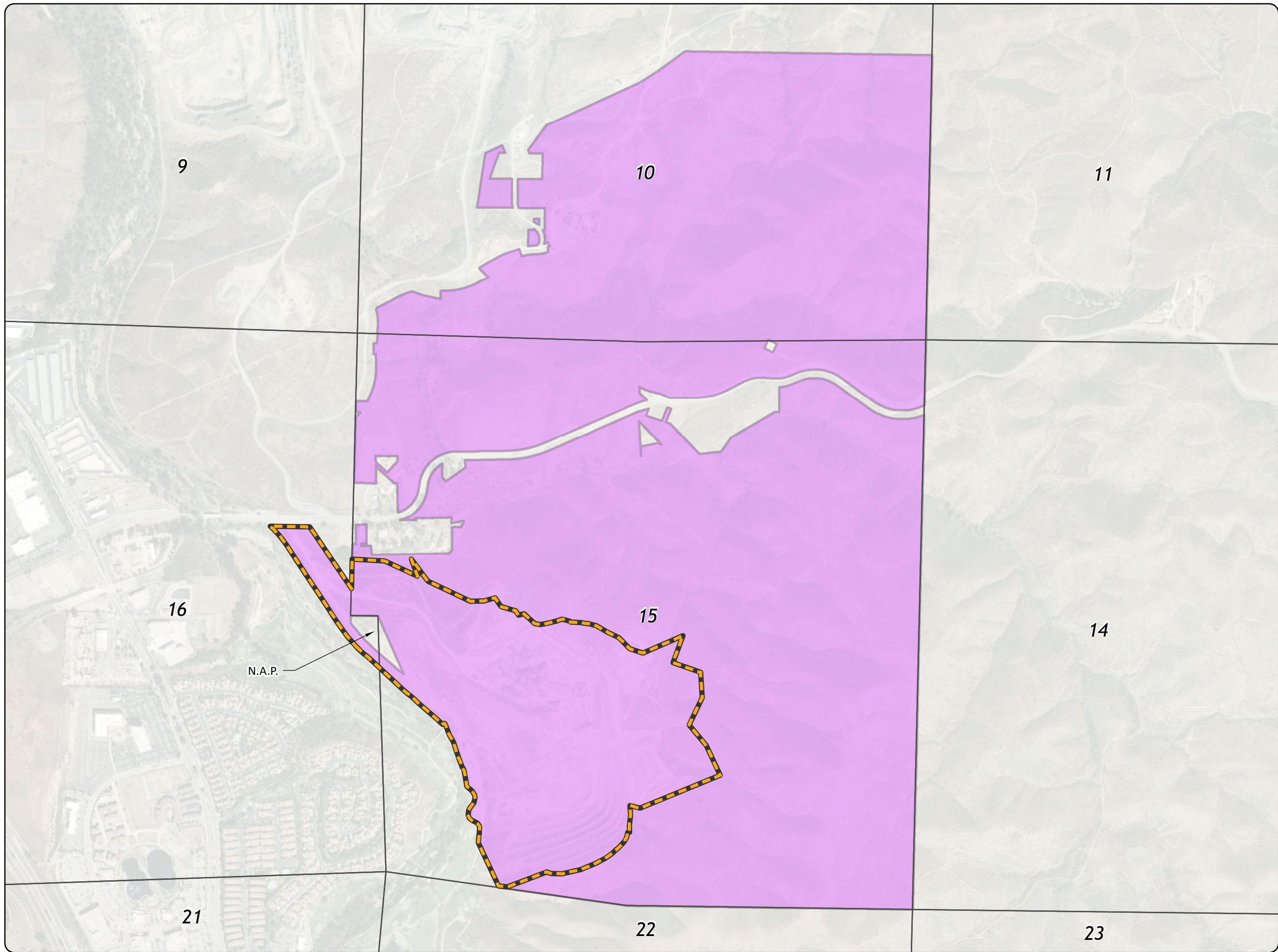
Appendix B-1: Vested Rights Area

**Figure B-1.2: 2021 HH VRA**

Confirmation of Geographic  
Scope of HH VRA  
Hubbs/Harlow Quarry  
Riverside County, California

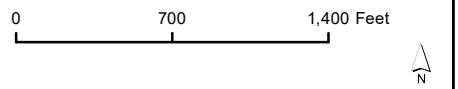
Legend:

-  RCL118S4 Boundary  
(Vested Rights Confirmed)
-  Vested Rights Area (HH VRA)
-  Not a Part (of Robertson's  
Ownership Interest, 1949)



**Graphic revised on 9/15/2022**

Basemap: Source: Esri, Maxar, Earthstar  
Geographics, and the GIS User Community



*Disclaimer: The data was mapped for planning purposes  
only. No liability is assumed for accuracy of the data shown.*

Prepared by: Sage Thurmond, Compass Land Group  
3140 Peacekeeper Way #102, McClellan Park, CA 95652

