

County of Riverside  
**ASSESSOR MAP SECTION: 537**



## MAP BOOK INDEX TO SUBDIVISIONS

**Bk. No. 537**

*SHEET 1 OF 2*

[illegible]

10/84



*SHEET 2 OF 2*

 $\frac{10}{8}$



BK.  
535

SEC'S. 7, 17 & 18, T.3S., R.1E.

SUPERV DIST #3

ALL BUSD



BK.  
419

BK.  
538

50

4 COR.  
PIPELINE  
NEED  
CLEARANCE

BK.  
421

BK.  
543

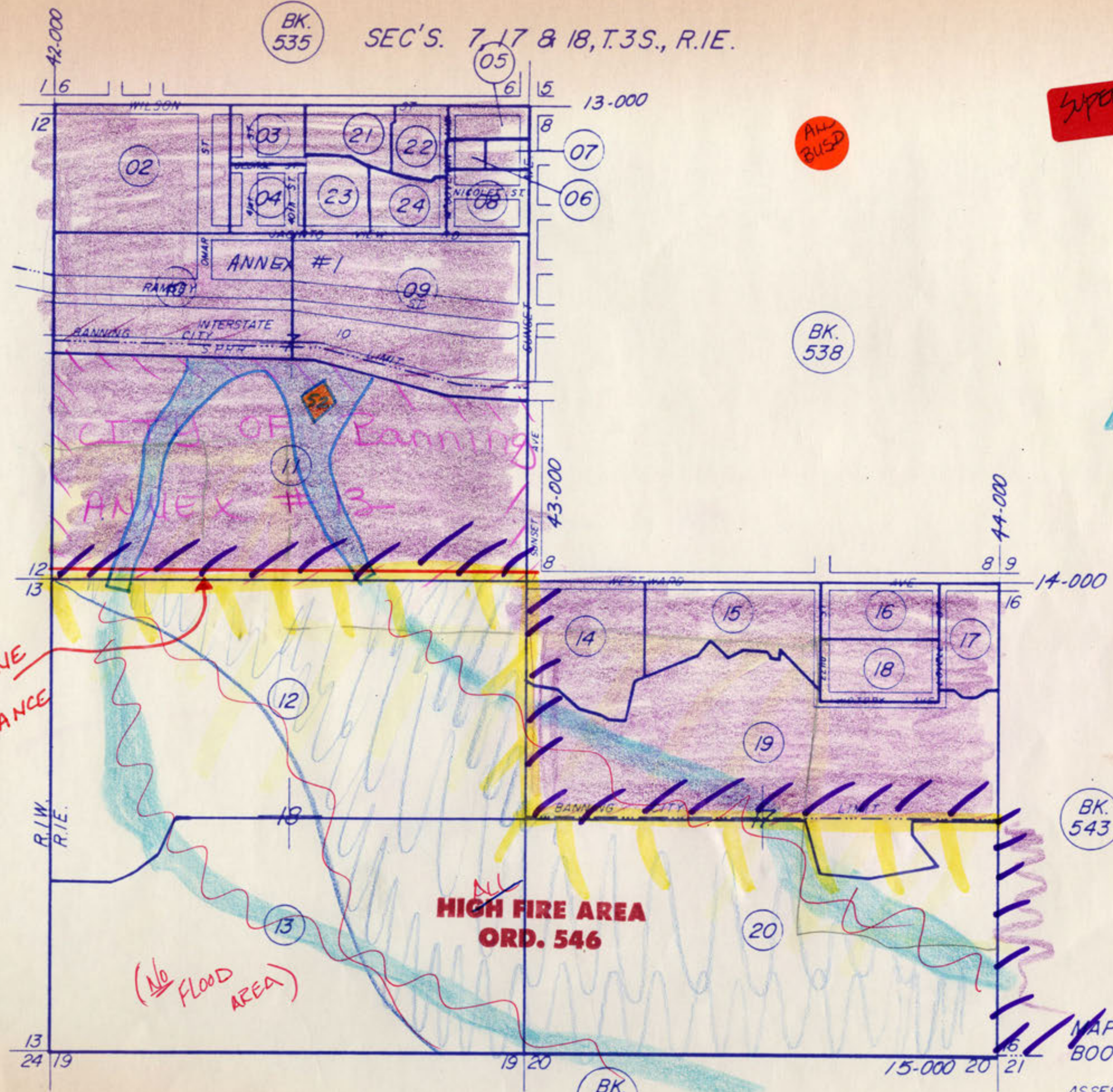
**HIGH FIRE AREA  
ORD. 546**

(No FLOOD AREA)

10/84

MAP INDEX

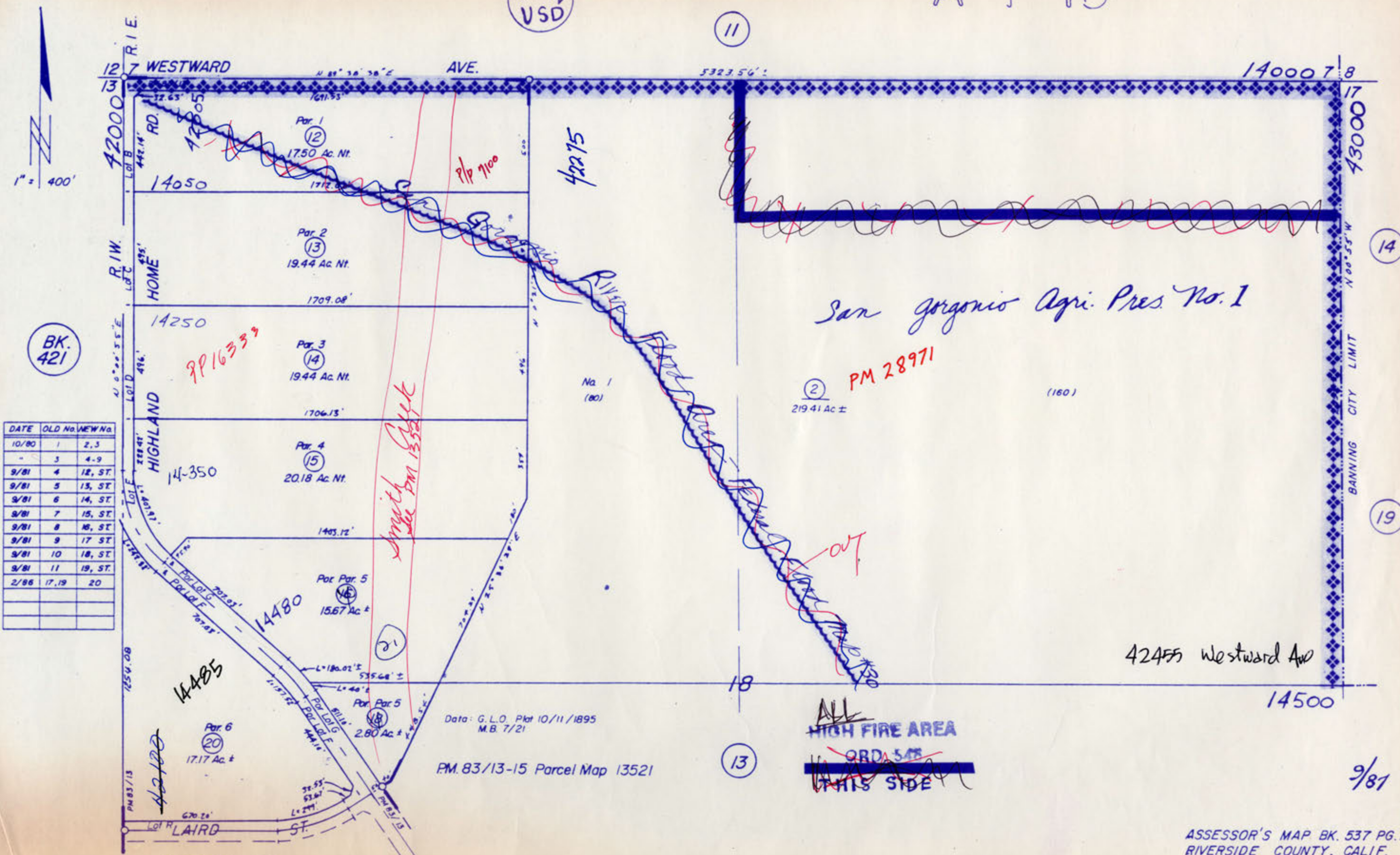
MAP INDEX  
BOOK 537





BANN  
USD

11



ASSESSOR'S MAP BK. 537 PG. 12  
RIVERSIDE COUNTY, CALIF.



**HIGH FIRE AREA  
ORD. 546**

ORD. 348.1362



BK.  
544

10/84

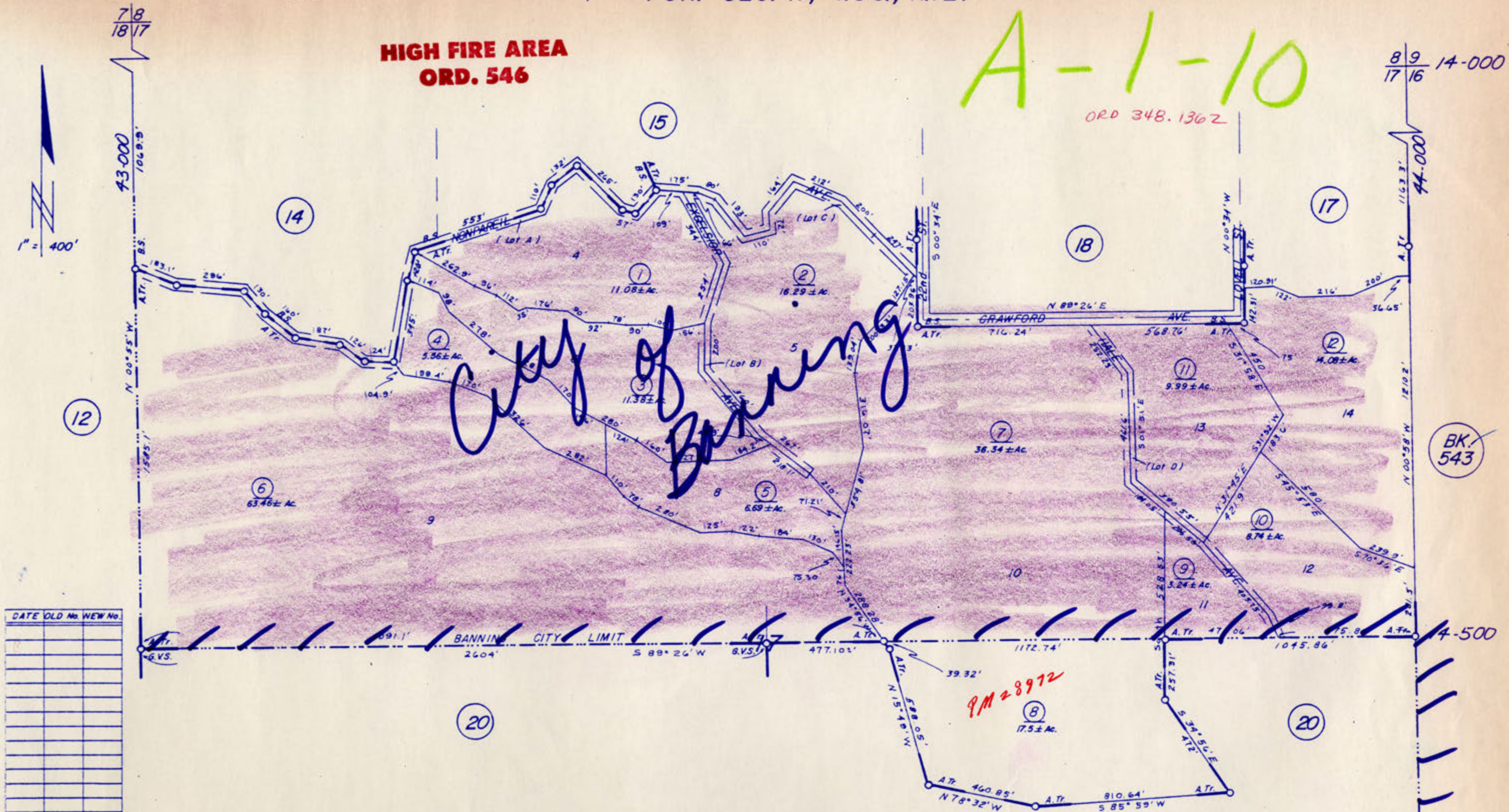


POR. SEC. 17, T.3S., R.1E.

**HIGH FIRE AREA  
ORD. 546**

A-1-10

ORD 348.1362

$$\frac{89}{1716} \quad 14-000$$


*M.B. 18/3 Almcot Tract*

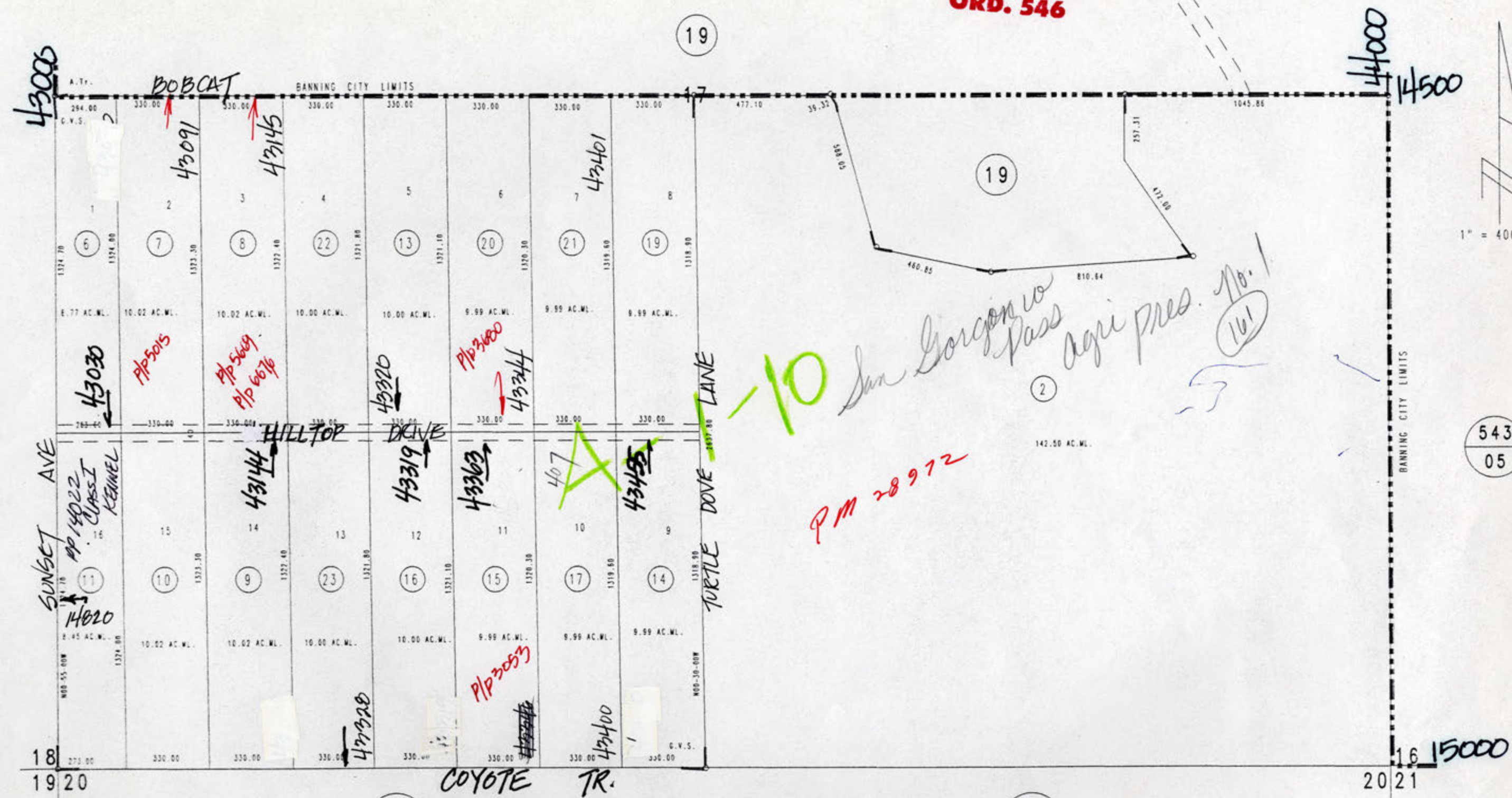


13

T.R.A. 055-008

537-20  
24-26

**HIGH FIRE AREA  
ORD. 546**



DATA: MB 16/3  
RS 84/23  
MB 9/2

ASSESSOR'S MAP BK. 537 PG. 20  
Riverside County, Calif.

AMEN

MB 245/36 GRAND VIEW SUBDIVISION

OCT. 1969  
REV. JULY 1993

REVISIONS		
DATE	OLD NO	NEW NO
9/77	1	3-5
9/77	3	6-11
9/77	4	13-17
9/77	5	18-19
9/77	18	20-21
3/78	12	22-23