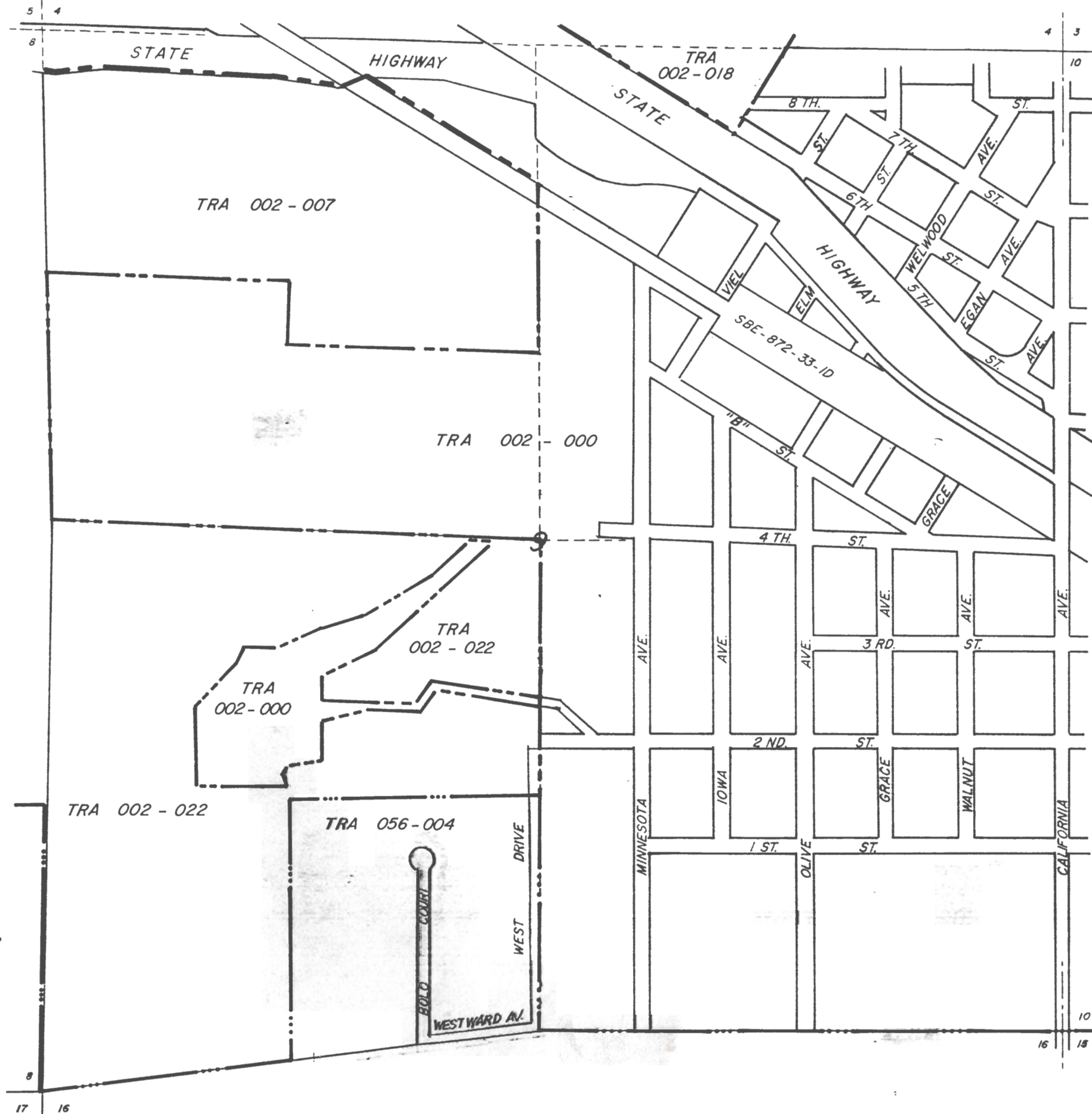


County of Riverside
ASSESSOR MAP SECTION: 417

180



CODE AREA INDEX

APR. 1970

CODE AREA INDEX

BOOK 417

ASSESSOR'S MAP
RIVERSIDE, COUNTY CALIF.

BK. 417 OVERLAY

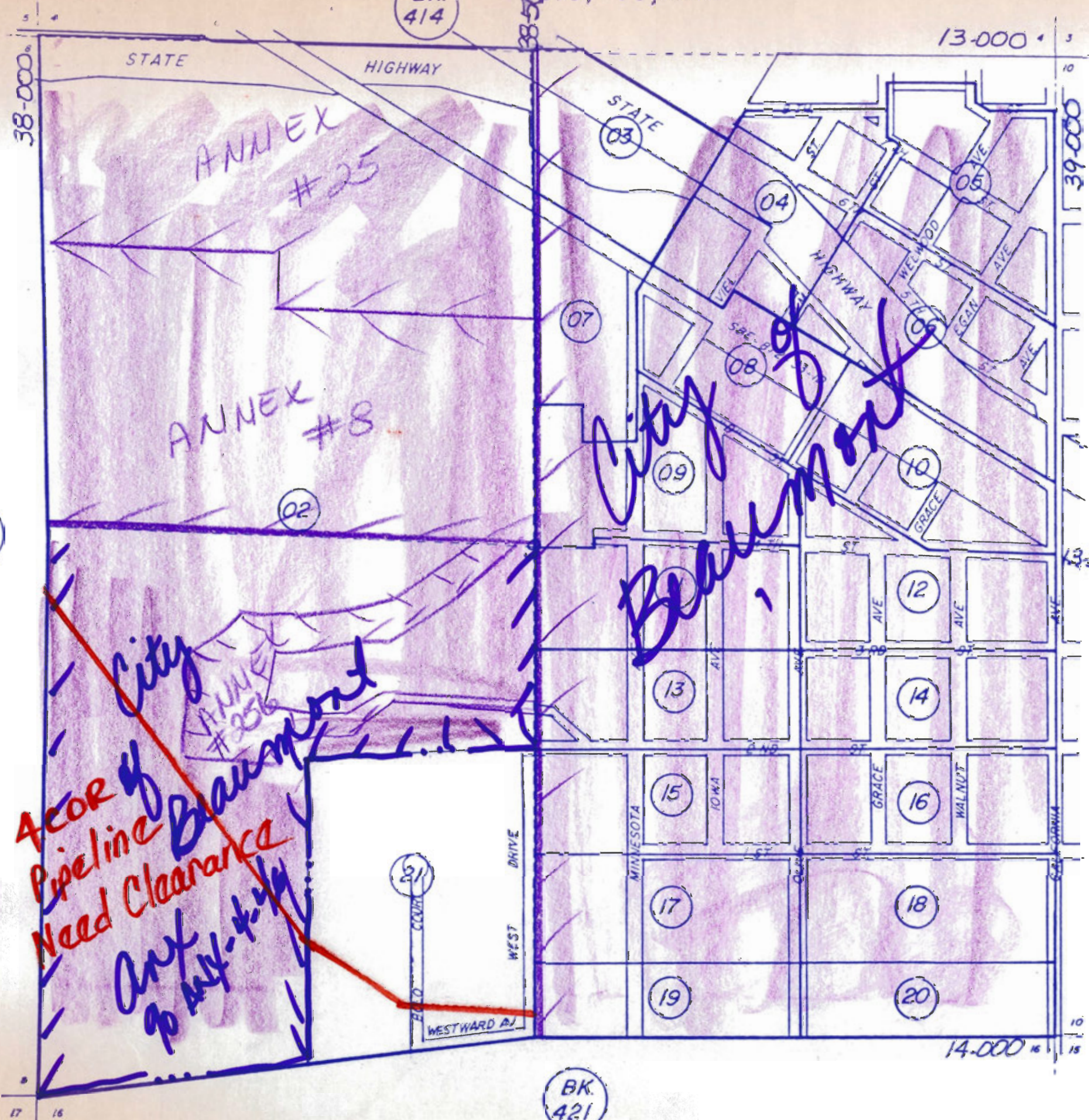
WC Cat-3194



SEC. 9, T.3S, R.1W.

BK. 414

13-000



BK. 421

SUPERV. DIST
#3



BK. 418

13-500

14-000

BK. 421

MAP INDEX

OLD Pg	NEW PAGE

APR. 1970

MAP INDEX

BOOK 417
ASSESSOR'S MAP
RIVERSIDE, COUNTY CALIF.

1/86

Ord. 348. 2207

M-H
Ord. 348.2202

(19)

R-A-5
(4.70)

ORD. 348.2609

The document is a purple-colored sheet, likely a cover or endpaper, featuring a faint map of Beaumont, Texas. The map includes latitude and longitude coordinates and labels for "CITY OF BEAUMONT" and "EX". Handwritten in large, bold, blue ink are the words "CITY OF" at the top and "BEAUMONT" at the bottom. In the center, there is a circled number "21" followed by "EX #2". To the left of the circle, the text "PU# 238" is written in red ink. The background also shows some printed text, including "N 0° 15' 15\" W" and "N 69° 20' 15\" W".

ANNEX-4-46
90-ANN-4-46 (4510)

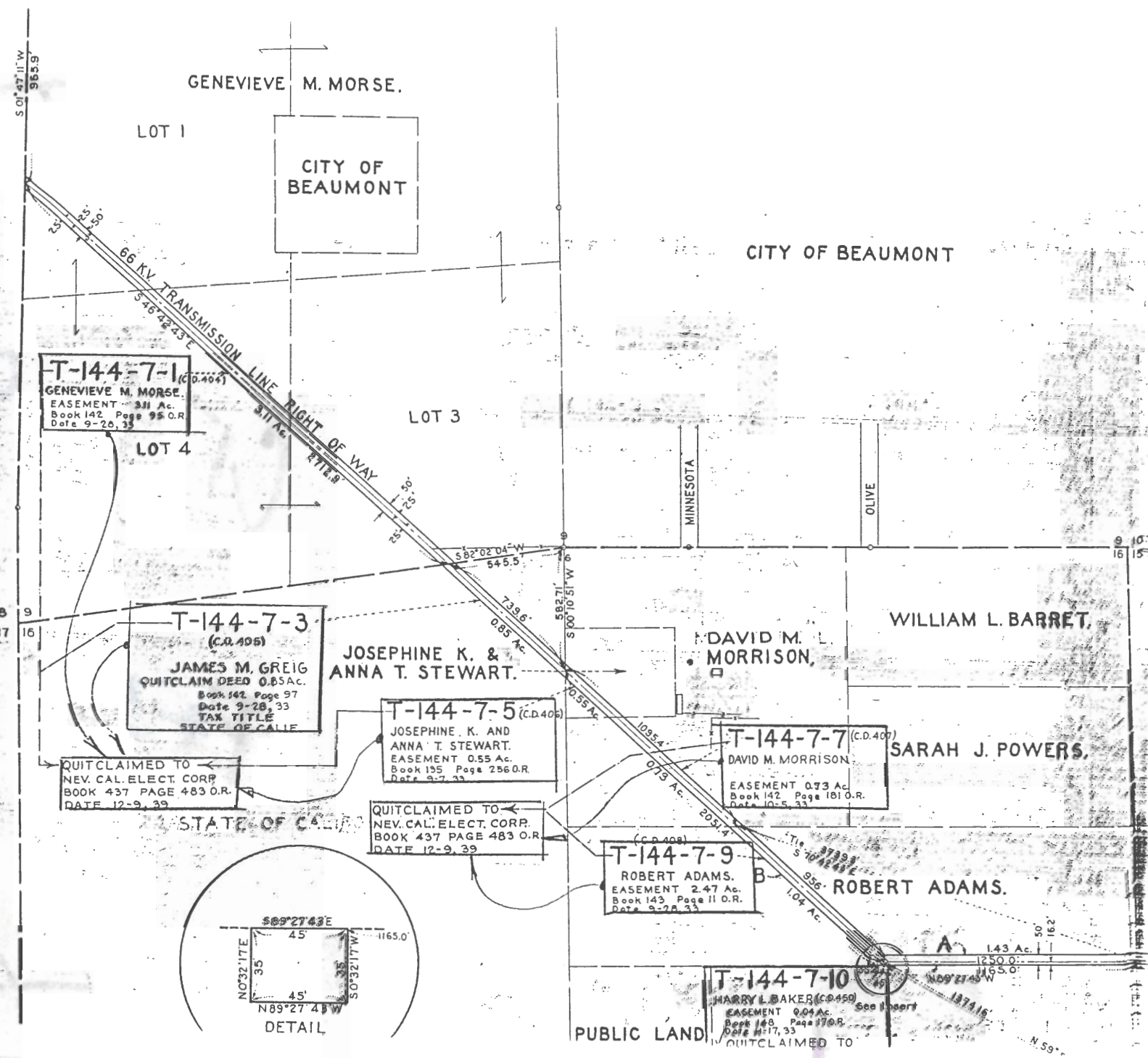
BK
421

DATA; Dd. 1249-1/51
CO. SUR. MAP 204-16-1
" " " 240-D-3
S.B.E. MAP 872-33-1E
R/S - 13/49
R/S - 15/37

ASSESSOR'S MAP BK 417 PG. 02
RIVERSIDE COUNTY CALIF.

W.C.

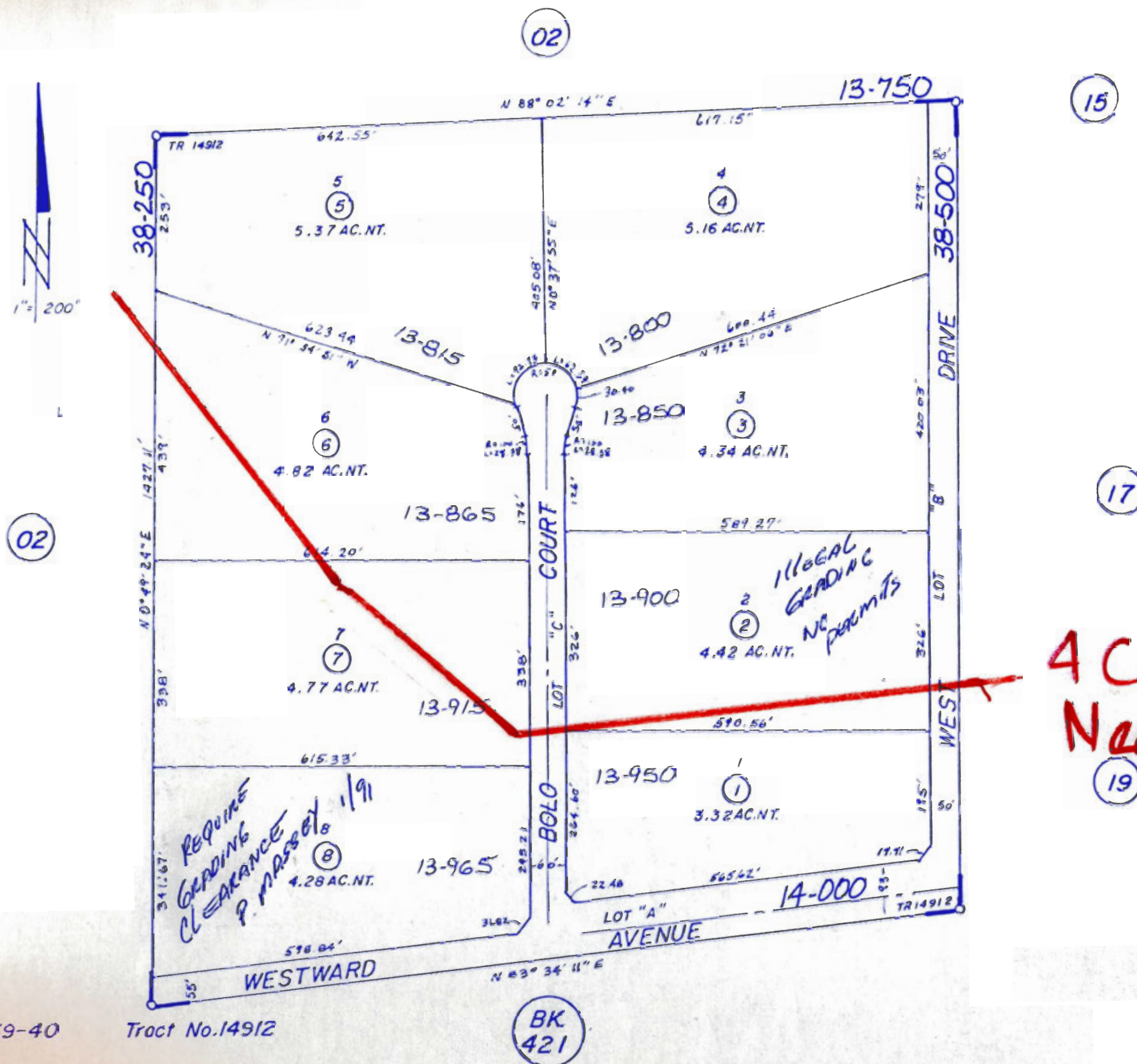
DATE	OLD NO.	NEW NO.
3/79	803	13
"	810	14
"	902	15
3-81	5	16, ST.
"	6	17, ST.
"	7	18, ST.
"	8	19, 20, ST.
"	14	21, ST.
7-82	15	22, 23
12/85	12	PG 21



T.R.A. 056-004

POR. SW 1/4 SEC. 9, T3S, R1W.

R-A-5
348-2604



4 Cor Pipeline
Needs Clearance
(19) (WRITER - PRIETO P.C.)

[illegible]

M.B. 154/39-40

Tract No. 14912

BK
421

 $\frac{1}{86}$