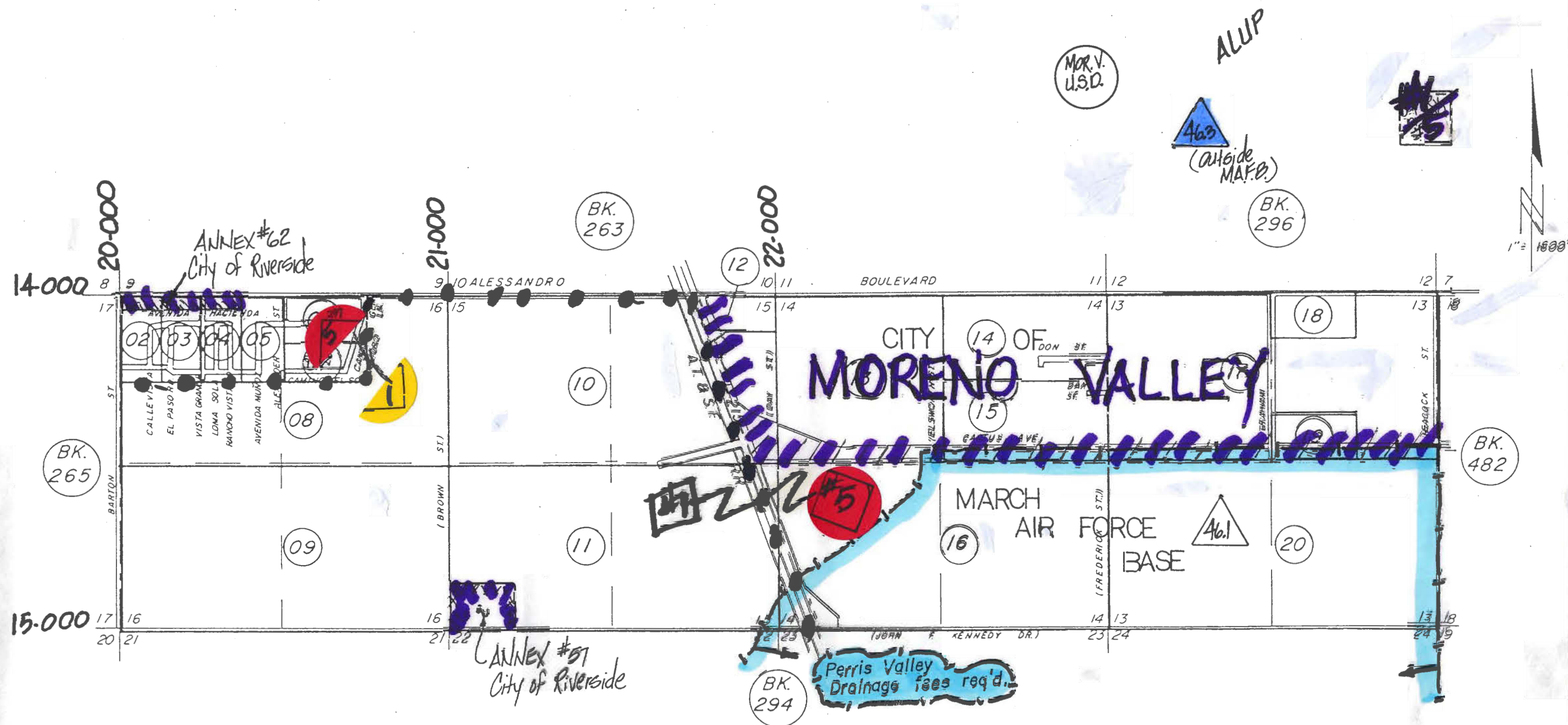


County of Riverside
ASSESSOR MAP SECTION: 297

MAP BOOK INDEX TO SUBDIVISIONS

BK. NO. 297[illegible]

SECS. 13-16, T.3S. R. 4 W.



BOOK 297
MAP INDEX

ASSESSOR'S MAP
RIVERSIDE COUNTY, CALIF.

MAP INDEX

MAR. 1986 SC

297-02

MAY 11 1993

(MVUSD)

$$\frac{2}{3}$$

BK. 263

BOULEVARD

ALESSANDRO

Annex # 62

City of Riverside
1-83 AC1

~~BARTON~~

BK.
265

STREFF 884.12

M.B. 55/88-89 Tract No. 3308

3/88

[illegible]

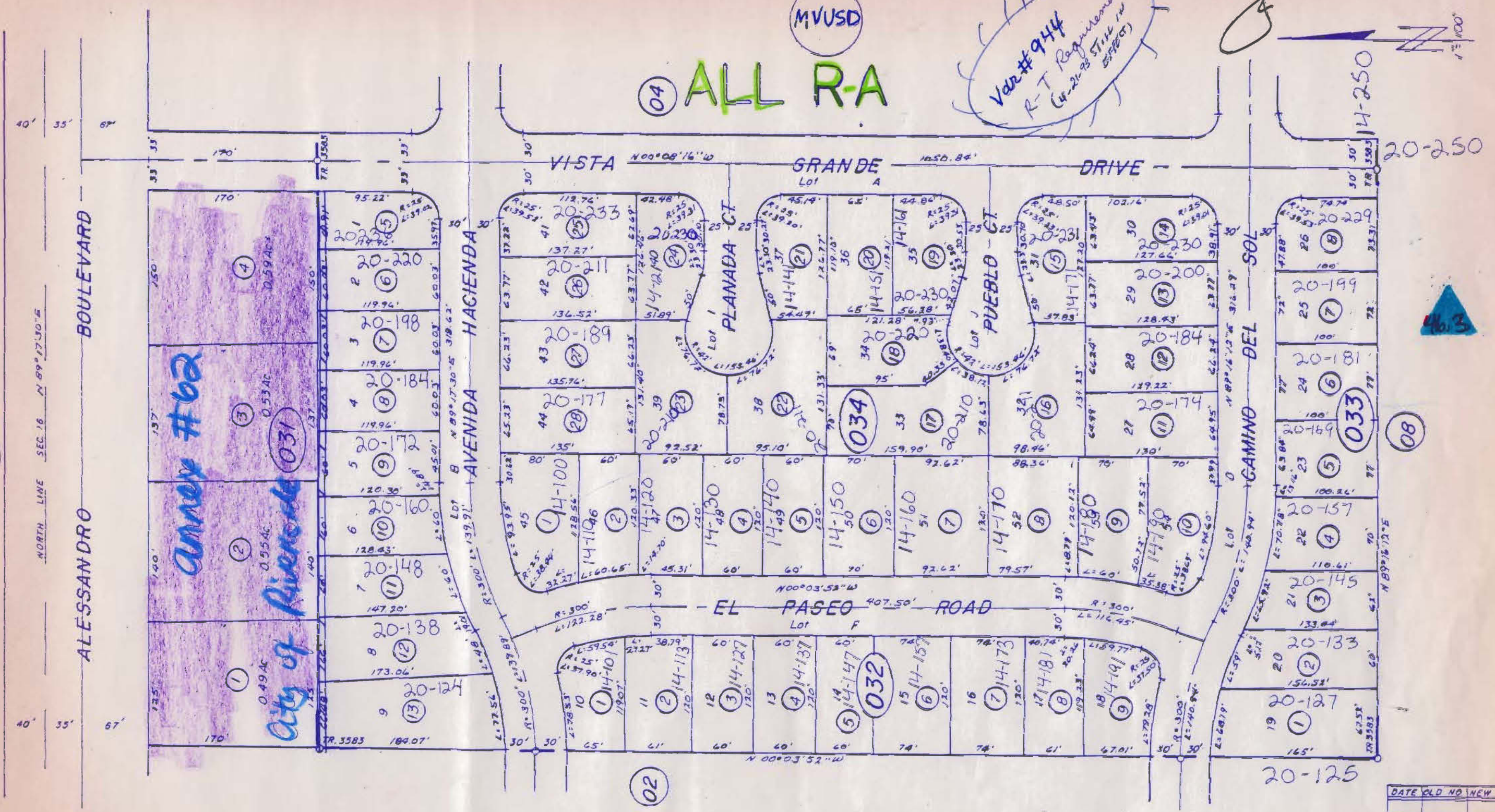
POR N 1/2 NW 1/4 SEC. 16, T3S. R.4 W.

MVUSD

04 ALL R-A

Var # 944
R-T Requirements
(11-21-93 Still in Effect)

7-5.
MAY 11 1993



BK.
263

M.B. 58/1-3 Tract No. 3583

3/88

JAN 1986

[illegible]

293-19
297-04

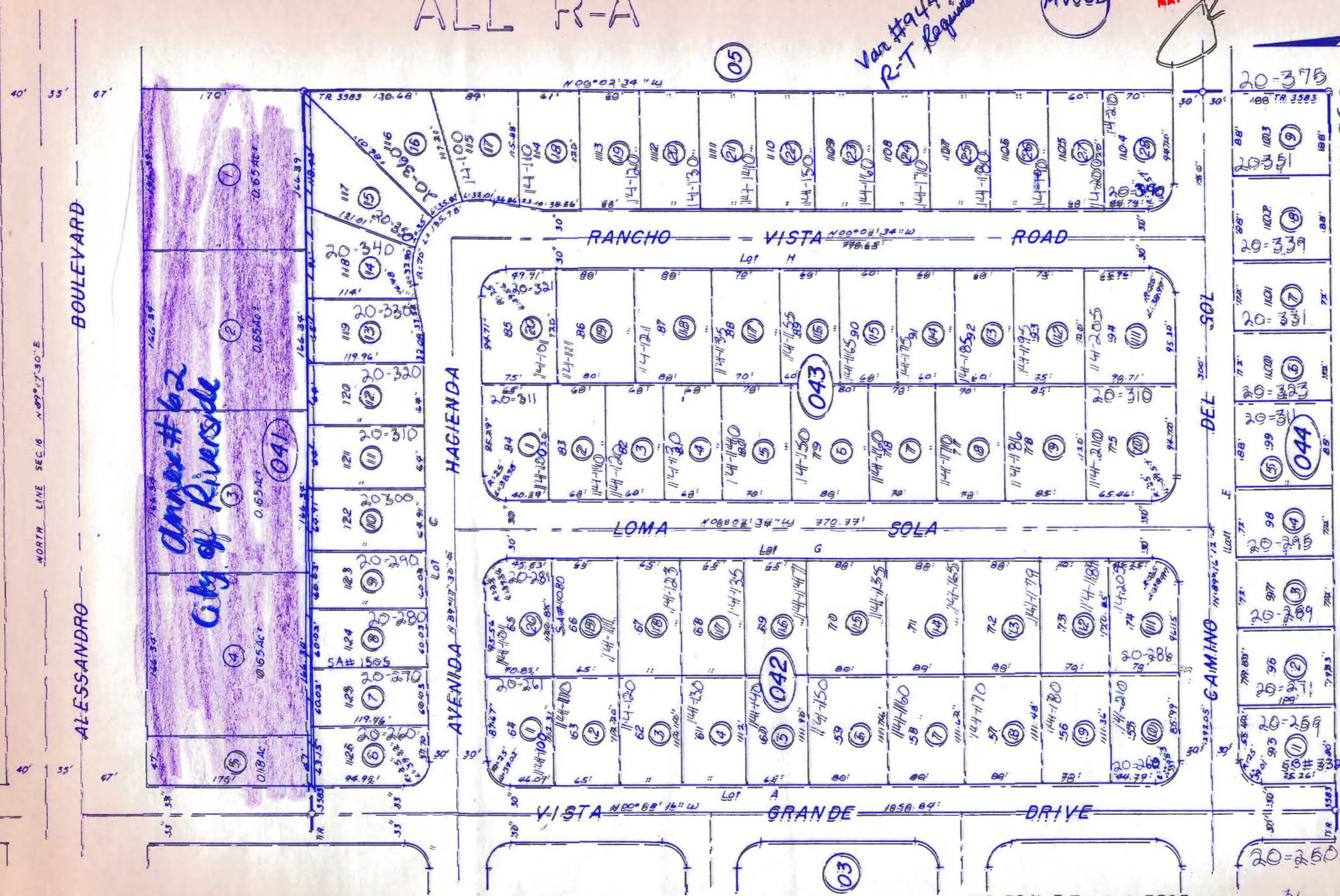
POB. N1/2 NW1/4 SEC 16, T.3 S. R. 4 W.
ALL R-A

T.R.A. 080-092

MAY 11 1993

MVUSD

3 S. P. 4 W.
Var #944
R-T Requirements



BK.
263

ASSESSOR'S MAP BK. 297 PG. 04
RIVERSIDE COUNTY, CALIF.

M.B. 58/1-3 Tract No. 3583

3/88

[illegible]

JAN 1986 SC

POR. N 1/2 NW 1/4 SEC. 16, T3 S. R4 W.

R-A

(MVUSD)

MAY 1 1993

CAMINO DEL SOL

ALEXANDER ST.

20-500



80

(BK. 263

BOULEVARD

ALESSANDRO

A hand-drawn diagram of a cell. It features a large, irregular outer boundary representing the cell membrane. Inside this boundary is a smaller, roughly circular structure representing the nucleus. Within the nucleus is a small, dense, dark-shaded circle representing the nucleolus. A single vertical line segment passes through the center of the nucleolus, extending slightly above and below it.

CAMINO DE GLORIA
N 8701730 E 243

MUNOZ

~~CAMINO DEL SOL~~

M.B. 107/15-16 Tract No. 10524

ASSESSOR'S MAP BK297 PG 05
RIVERSIDE COUNTY, CALIF

3/88

JAN 1986 SC

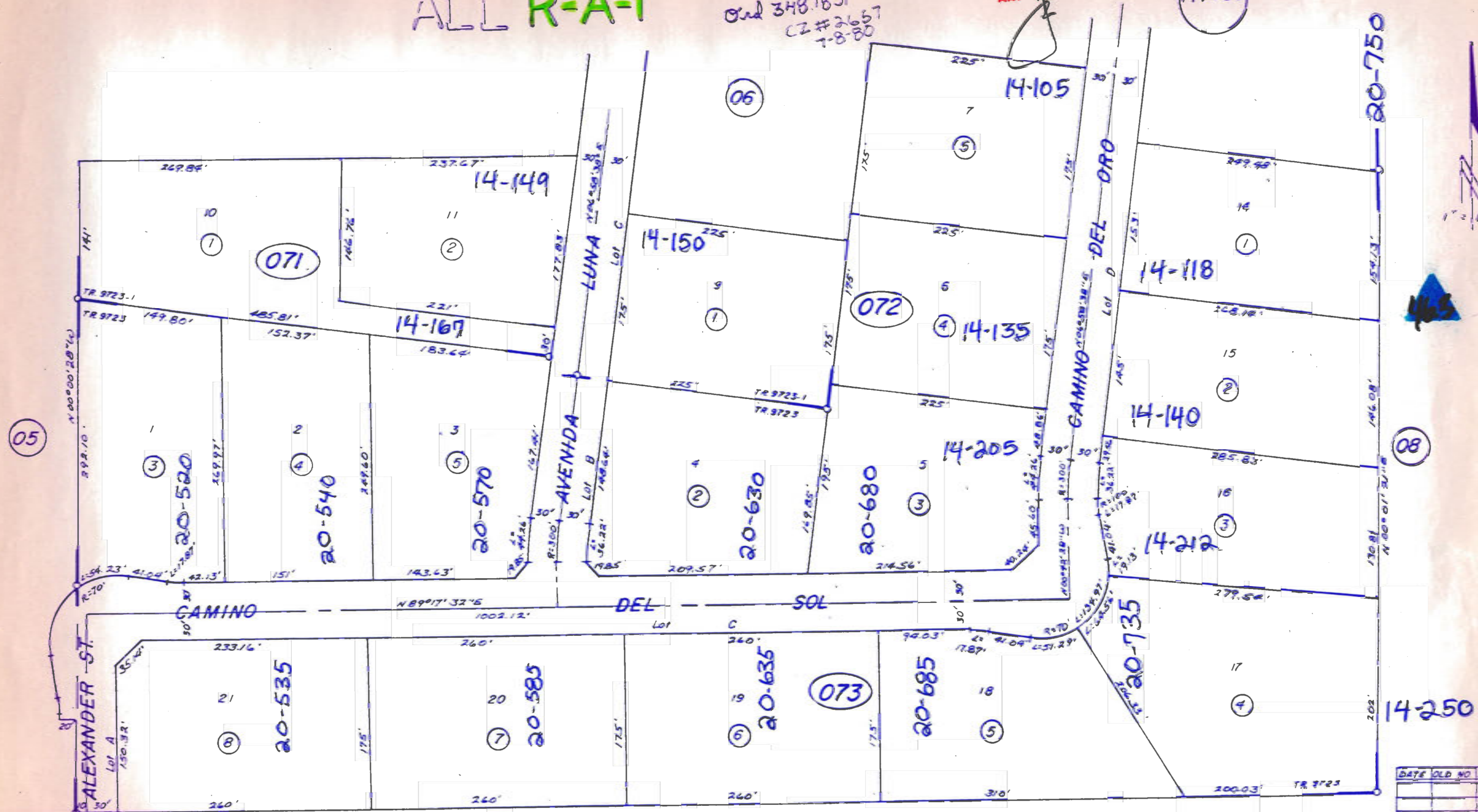
[illegible]

ALL R-A-I

Qnd 348.1831
CZ #2657
7-8-80

MAY 13 1999

(MVS)



M.B. 98/53-55 Tract No. 9723-1
M.B. 111/54-56 " " 9723

3/88

FEB 1986

ALL-R-R

08

B.S.
MAY 11 1993

297-09

(MVUSD)

14-500

$$" = 400'$$

12

BK.
265

EX
79.81 Ac

M.A.F.B.

② ^{EX}
40.00 Acc

③^{EX}
25.00 Ac²

④^{EX}
2200Ac³

664.16'

⑧^{EX}
10.00 Ac

264.17'

⑥^{EX}
2000Acs

1328.33

⑤^{EX}
40.00 Ac

⑨ EX
80.00 Ac

⑦^{EX}
10.00 Ac

663.80'

663.80'

1327.61

$$\begin{array}{r} 15 \ 15 \\ \hline 21 \ 22 \end{array}$$

JOHN F. KENNEDY

N 89° 14' 35" W 5310.43

DRIVE

15-000

BK.
294

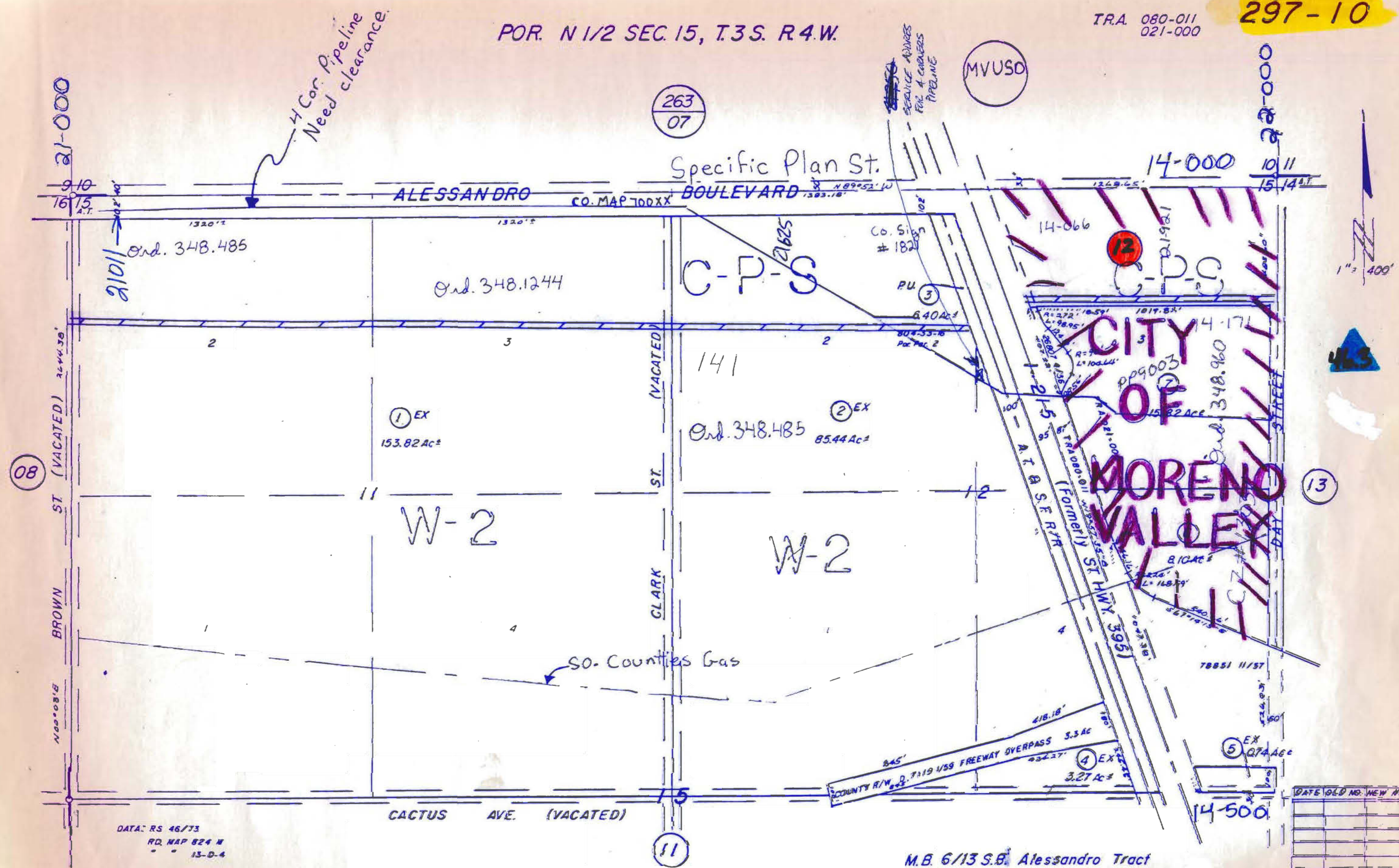
3/88

ASSESSOR'S MAP BK. 297 PG. 09
RIVERSIDE COUNTY, CALIF.

FEB. 1986 SC

[illegible]

POR. N 1/2 SEC. 15, T.3 S. R.4 W.



ASSESSOR'S MAP BK. 297 PG 10
RIVERSIDE COUNTY, CALIF

FEB 1986 SC



