

PLANNING UNITS 11b & 12

Approved Planning Unit 11b

Land UseR-4 Patio Homes
Acreage.23.7 Acres
Density.3.7 Units per Acre
No. of Units . . .87 Units

Approved Planning Unit 12

Land UseR-4 Patio Homes
Acreage.7.9 Acres
Density.5.0 Units per Acre
No. of Units . . .39 Units

Proposed Planning Area 8

Land UseR-4 Patio Homes
Acreage.31.0 Acres
Density.4.7 Units per Acre
No. of Units . . .146 Units

Summary:

The combining of Planning Units 11b and 12 retains the same land use and nearly the same land mass, although a total of 20 dwelling units are transferred into the new Planning Area 8. A transfer of 20 units from Planning Unit 3.

The addition of Park 5, a 1.65 acre park, incorporated into Planning Area 8.

This area has been approved by the County as Vesting Tentative Tract #22673.

Additional design and landscape standards can be found in the Appendix.

PLANNING AREA 8	
LAND USE	R4
ACRES	31
DENSITY (d.u./ac)	4.7
NO. OF UNITS	146

PARK SITE

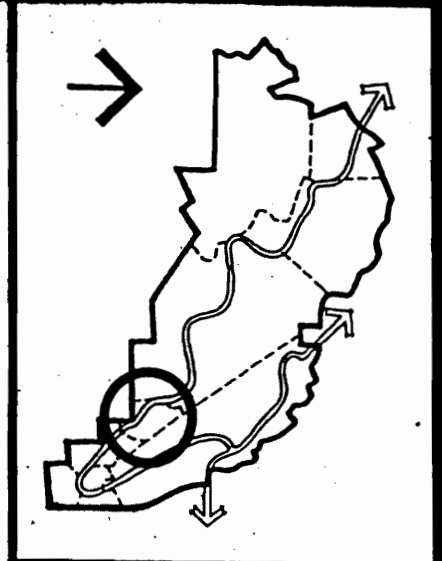
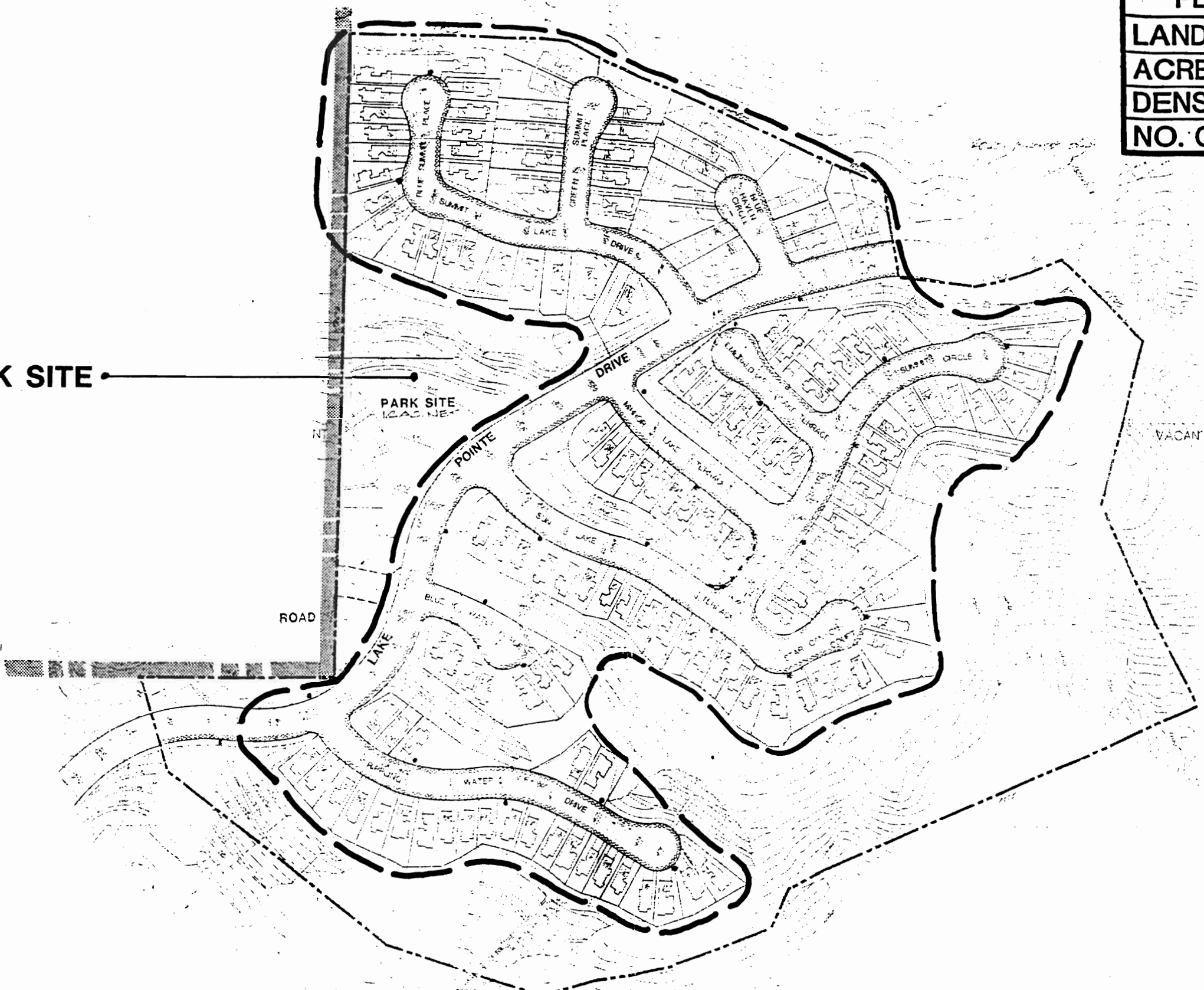


FIGURE 10