

PLANNING UNIT 9

Approved Planning Unit 9

Land Use . . . . .R-4 Patio Homes  
Acreage. . . . .7.3 Acres  
Density. . . . .5 Units per Acre  
No. of Units. . .37 Units

Proposed Planning Area 5

Land Use . . . . .R-4 Patio Homes  
Acreage. . . . .11.2 Acres  
Density. . . . .3.5 Units per Acre  
No. of Units . . .39 Units

Summary:

Two units from Planning Unit 2 are transferred into Planning Area 5. Additionally, an increase of 3.9 acres within the Planning Area in order to accomodate a portion of Park #4, a new lookout point and trail as well as a small natural peak next to the park (see Figure ). None of these facilities were included within Planning Unit 9.

Planning Area 5 has been approved by the County as Vesting Tentative Tract #23156.

Additional design and landscape standards can be found in the attached Appendix.

<b>PLANNING AREA 5</b>	
<b>LAND USE</b>	<b>R4</b>
<b>ACRES</b>	<b>11.2</b>
<b>DENSITY (d.u./ac)</b>	<b>3.5</b>
<b>NO. OF UNITS</b>	<b>39</b>

**PARK SITE** •

**NATURAL OPEN SPACE** •

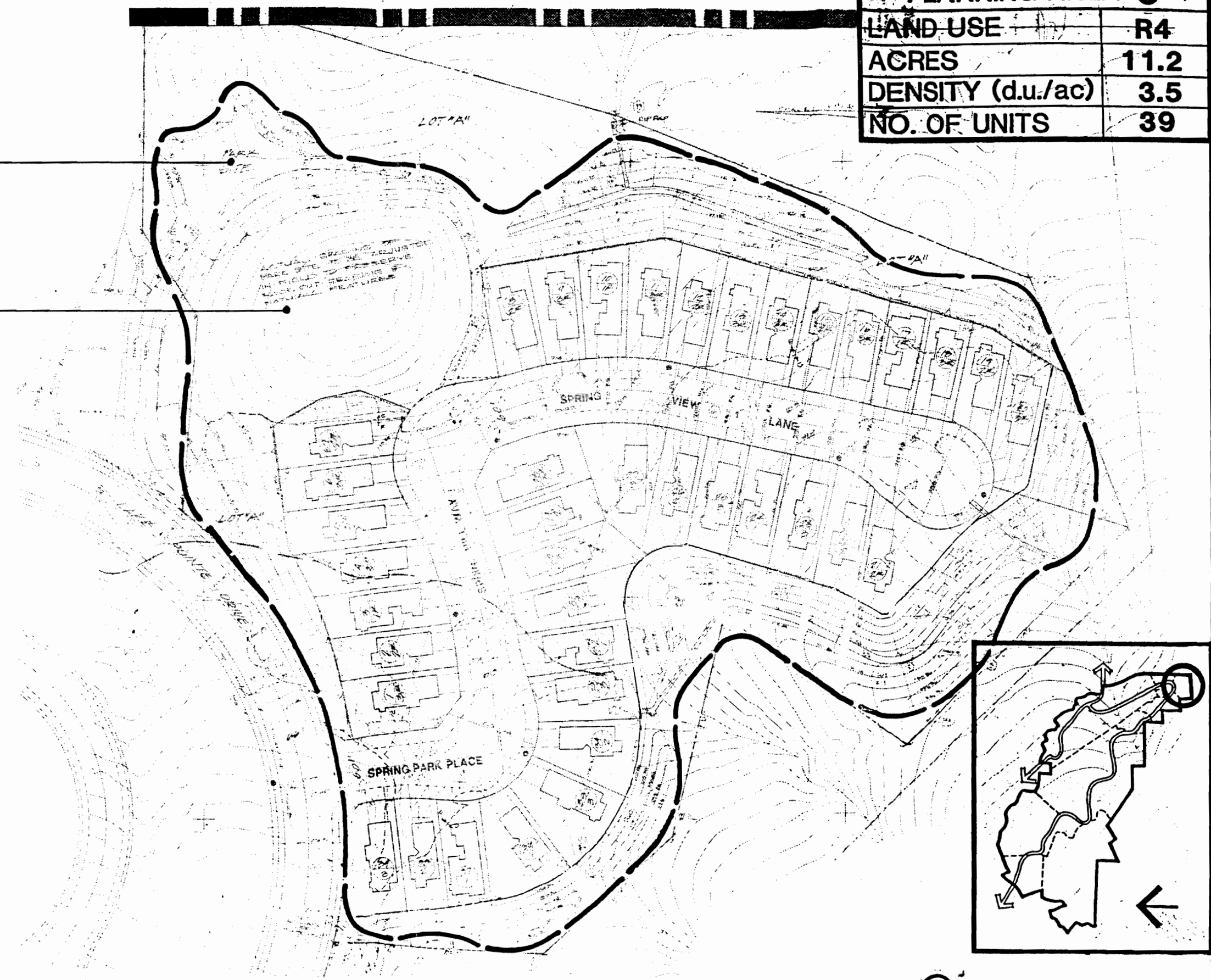


FIGURE 7