

PLANNING UNITS 21, 22, 23

Approved Planning Unit 21

Land UseR-4 Patio Homes
Acreage.28.8 Acres
Density.5.0 Units per Acre
No. of Units . . .144 Units

Approved Planning Unit 22

Land UseR-4 Patio Homes
Acreage.5.5 Acres
Density.4.9 Units per Acre
No. of Units . . .27 Units

Approved Planning Unit 23

Land UseR-4 Patio Homes
Acreage.6.2 Acres
Density.4.5 Units per Acre
No. of Units . . .28 Units

Proposed Planning Area 11

Land UseR-4 Patio Homes

Acreage.44.4 Acres

Density.4.4 Units per Acre
No. of Units . . .197 Units

Summary:

This Amendment removes the 1.92 acre area zoned retail commercial and adds it to Planning Area 11. The 1.92 acre area will then be subdivided into 8 residential lots per Tentative Tract Map 29339. This will increase the total number of units in Planning Zone 11 from 189 units to 197 units. At the same time it will increase the number of acres in Planning Area 11 to 44.4 acres.

PLANNING AREA 11	
LAND USE	R4
ACRES	44.4
DENSITY (d.u./ac)	4.4
NO. OF UNITS	197

1.9 ACRE
NEIGHBORHOOD
COMMERCIAL
NOW ZONED R-4
AND MADE A PART
OF PLANNING AREA 11

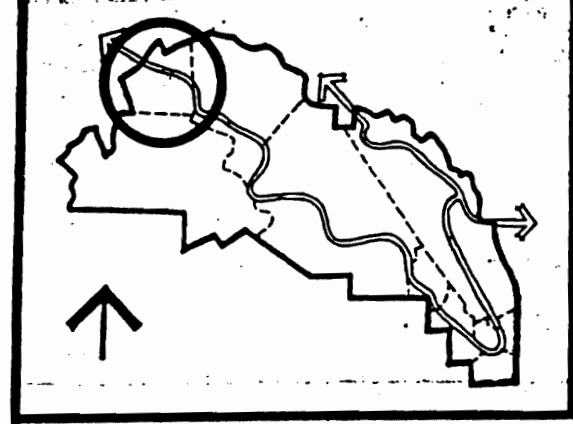
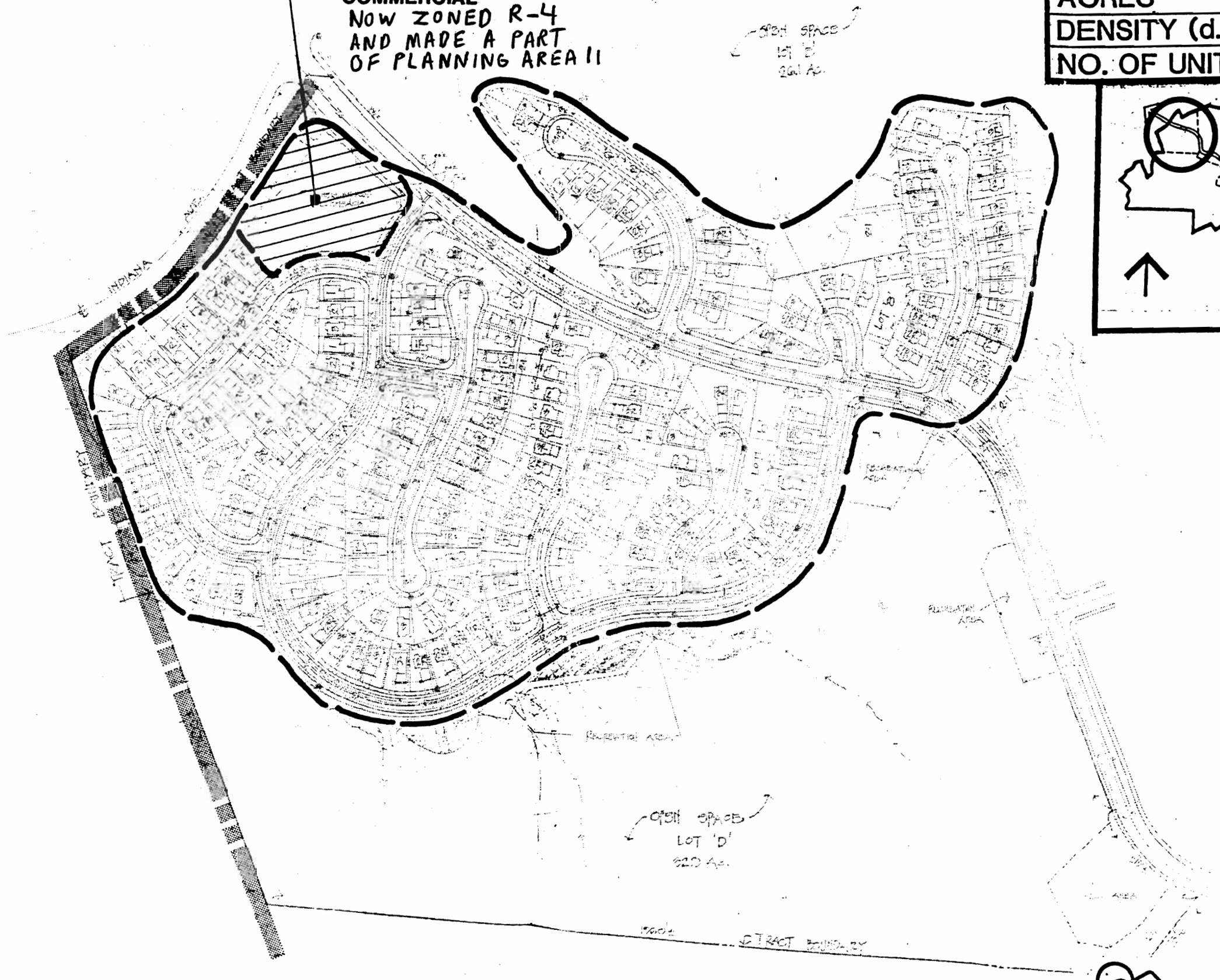


FIGURE 13